



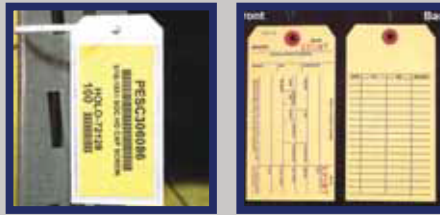
CALIFORNIA
LABEL PRODUCTS
BRAND IDENTITY | LABEL SOLUTIONS

www.californialabel.com

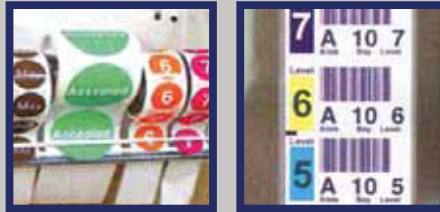
Tags & Labels for Warehouse Shelving

Improve Space Utilization & Increase Productivity

*Inventory
Tags*



*Adhesive
Labels*



*Card
Holders*



Magnets



310.523.5800

SHELF LABEL MAGNETS



Magnet for Adhesive Label



Longer Magnet for Multi-Level Labels

No Labels? Write Directly on the Magnet

- Write your product location information directly on the durable vinyl surface of a 1/32" magnet
- For information that does not change, you may use your own permanent markers
- If changes or updates are likely, we recommend using our *Damp Erase Pens* (see picture below)



Magnets to Write-on

Custom Cut to Your Specs

Magnets may be cut to non-standard dimensions; use the next larger size in the chart for price

Common Applications

Shelves & Racks Cabinets & Drawers
Bins & Steel Containers Magnetic Boards
Steel Doors & Frames

Related Products

Adhesive Label Sheets reduce printer feed hassles with our 100 sheet pack for \$28.00, see page 11 for sizes and quantities

Bar Code and Custom Warehouse Labels place your bar code labels on magnets for convenient repositioning, see page 15

Damp Erase Pens - easy write-on/wipe-off, see page 18

Magnet Color Choices

White Orange Red Black Gold Brown



Yellow Green Blue Silver Ivory

Pick a Couple Colors and Call for Samples!

Use Your Shelf Labels - Hassle Free

- Eliminate the hassle of peeling sticky labels
- Apply your bar code or SKU labels to magnets for easy relocating
- Large selection of sizes to accommodate almost any label size (see our *Adhesive Label Sheets* on page 11)
- Choice of 11 colors is available at no extra charge
- These versatile magnets are recommended for applications in work environments from 0-160 degrees F.

Easily Read Labels for All Rack Levels

- Save searching and viewing time plus reduce errors
- Use your barcode or human readable labels and place them on one shelf near eye level for quick and easy man-down reading
- Simply sequence the labels by the level or use a rack level code to conveniently identify the proper level shelf and product (as shown at right)

Magnet Size H" x L"	Pkg Qty	Magnet Part #	Pkg Price	Optional Labels 100 Sheet Pack Part # *
1/4 x 50' roll	1	M.25X600	13.65	--
1/2 x 50' roll	1	M.5X600	19.05	--
3/4 x 50' roll	1	M.75X600	24.45	--
1 x 2	25	M1X2	4.75	SA05X175
1 x 3	25	M1X3	5.75	SA1X283
1 x 4	25	M1X4	6.75	--
1 x 5	25	M1X5	7.75	SA1X4
1 x 6	25	M1X6	9.00	--
1 x 12	25	M1X12	15.25	SA1X_
1 x 50' roll	1	M1X600	29.00	SA1X_
1 x 200' roll	1	M1X2400	90.00	SA1X_
1-1/2 x 4-1/2	25	M1.5X4.5	10.50	SA15X4
2 x 3	25	M2X3	7.50	SA15X283
2 x 4	25	M2X4	9.00	SA2X4
2 x 5	25	M2X5	10.50	SA2X42
2 x 6	25	M2X6	12.25	--
2 x 8	25	M2X8	15.50	--
2 x 12	25	M2X12	21.75	--
2 x 50' roll	1	M2X600	51.00	SA2X_
2 x 200' roll	1	M2X2400	135.00	SA2X_
3 x 4	25	M3X4	11.25	--
3 x 5	25	M3X5	13.25	SA275X425
3 x 6	25	M3X6	15.50	--
3 x 8	25	M3X8	19.75	--
3 x 12	25	M3X12	28.50	--
3 x 50' roll	1	M3X600	72.75	SA275X425
3 x 200' roll	1	M3X2400	160.00	SA275X425
3-1/2 x 5-1/2	25	M3.5X5.5	21.25	--
4 x 8	25	M4X8	24.25	--
4 x 9	25	M4X9	27.00	SA366X85
4 x 50' roll	1	M4X600	94.50	SA366X85
4 x 200' roll	1	M4X2400	200.00	SA366X85
4-1/2 x 3	25	M4.5X3	15.25	SA275X425
4-1/2 x 4	25	M4.5X4	19.50	SA333X4
4-1/2 x 5-3/4	25	M4.5X5.75	26.75	SA55X425
4-1/2 x 6-3/4	25	M4.5X6.75	31.00	--
6 x 9	25	M6X9	51.75	SA55X85
8 x 12	10	M8X12	35.25	--
12 x 24	5	M12X24	50.50	--

NOTE: 200' rolls are available in White only.

* See page 11

RACK & SHELF CARD HOLDERS



Great for Totes! ▶
Full adhesive backing adheres to a wide variety of bins, totes and other containers.



Corrugated Box Bins, Too ▶
Re-use and re-mark corrugated boxes clearly without covering labels or messy mark-outs.



Clear, Scan-Through Vinyl

- ▶ Good protection and still able to scan your bar codes and SKUs through a clear pouch
- ▶ These cardholders are very popular due to their durability and versatility

Reliable - FULL Back Side Contact

- ▶ Strong 8-gauge vinyl holder
- ▶ Designed with a pressure-sensitive adhesive (for permanent applications) or 30 mil thick magnetic rubber (for easy relocation) on the entire back side - not just the edges

Over 3,000 Sizes

- ▶ Specifications up to 18" x 24"
- ▶ Custom tooled sizes also available
- ▶ First select your desired card size, then match it to the holder size in the chart

It's a Label Holder

Use your adhesive labels by simply placing a label with its liner still intact into a neat, shelf adhesive card holder.



Short Side Loading Option

When ordering the long side (L) in the Holder Size dimension is the open end.

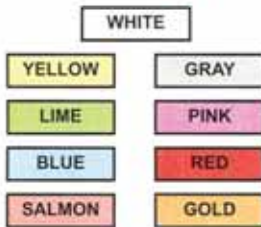
Short Side Opening!

Example: # H5X3MB pictured above is a long side loading, magnet backed holder. To order short side loading, reverse the size dimensions in the Part # H3X5MB.

Related Products

See *Job Ticket & Card Holders* and *Resealable Holders* on page 4, and *Grommet-Style Holders* on page 5

Optional Card Colors



FULL Backed Styles

Recommend Card Size H" x L"	Holder Size H" x L"	Pkg Qty	Adhesive		Magnet		Optional Cards 20 Sheet Pack Part # *
			Holder Part #	Pkg Price	Holder Part #	Pkg Price	
3/4 x 1-7/8	1 x 2	25	H2X06AB	19.50	H2X06MB	32.00	SL06X17
3/4 x 3	1 x 3-3/8	25	H3X06AB	20.50	H3X06MB	34.75	SL06X3
3/4 x 4	1 x 4-3/8	25	H4X06AB	20.50	H4X06MB	35.75	SL06X4
1 x 4	1-1/2 x 4-3/8	25	H4X1AB	21.50	H4X1MB	39.25	SL1X4
2 x 3	2-1/2 x 3-1/2	25	H3X2AB	22.50	H3X2MB	41.50	SL2X3
2 x 4	2-3/8 x 4-3/8	25	H4X2AB	23.00	H4X2MB	42.50	SL2X4
2-3/4 x 6	3-1/8 x 6-3/8	25	H6X26AB	26.50	H6X26MB	56.25	SL26X6
2 x 10	2-1/4 x 10-3/4	25	H10X2AB	28.00	H10X2MB	63.50	--
3 x 5	3-3/8 x 5-3/8	25	H5X3AB	26.00	H5X3MB	51.50	SL3X5
3 x 8	3-3/8 x 8-1/2	25	H8X3AB	30.00	H8X3MB	64.50	SL3X8
3 x 10	3-5/16 x 10-3/8	25	H10X3AB	32.00	H10X3MB	76.00	--
4 x 6	4-3/8 x 6-3/8	25	H6X4AB	29.50	H6X4MB	62.25	SL4X6
4 x 8	4-3/8 x 8-3/8	25	H8X4AB	32.50	H8X4MB	72.50	SL4X8
4 x 12	4-3/8 x 12-1/2	25	H12X4AB	39.50	H12X4MB	94.25	--
5 x 7	5-3/8 x 7-1/4	25	H7X5AB	33.50	H7X5MB	79.50	--
8-1/2 x 11	9-1/4 x 12-1/4	10	H12X9AB	24.50	H12X9MB	68.50	SL84X11

* See page 11

JOB TICKET & CARD HOLDERS



Clear Document Holder

8-1/2 x 11 size sheets



Hanging Ticket Holder

Clear, Read-Through Design

- Versatile clear holders are popular for holding a small single barcode card to a full instruction booklet
- Ruggedly constructed from strong, 8-gauge, crystal clear vinyl with welded, non-rip seams

Strip Backing or Plain

- Adhesive strip or magnet backing is applied in two lengthwise strips
- Adheres to smooth & irregular surfaces
- Holders are also available without any backing for stapling to wood, hanging, or protecting documents
- Metal reinforced grommets are also available - \$0.50 ea, Part # GROM-MET



Short Side Opening

Magnetic or Adhesive Strips on Back

Common Applications

Job Tickets, Shipping Orders, Equipment Manuals, Location Cards, Re-order Cards

Thousands of Sizes

The chart lists our more common sizes, but we have many other sizes available including custom to your specifications.

Choice of 3 Backing Styles



NOTE: Holders are slightly larger than the Insert Size dimensions listed at right.

* Data cards see page 11

** 1 x 4 and 2 x 4 holder sizes do not include a hanging hole

Insert Size H" x L"	Pkg Qty	Strip Adhesive Backed		Strip Magnet Backed		Plain Backed		Optional Cards 20 Sheet Pack Part # *
		Holder Part #	Pkg Price	Holder Part #	Pkg Price	Holder Part #	Pkg Price	
1 x 4	25	H1X4D**	35.50	H1X4M**	38.00	H1X4**	16.50	SL1X4
2 x 4	25	H2X4D**	36.50	H2X4M**	39.00	H2X4**	17.50	SL2X4
3 x 5	25	H3X5D	39.00	H3X5M	43.50	H3X5	19.50	SL3X5
4 x 6	25	H4X6D	42.00	H4X6M	47.00	H4X6	21.50	SL4X6
4 x 9	25	H4X9D	44.50	H4X9M	52.50	H4X9	23.00	SL4X8.5
5 x 8	25	H5X8D	47.00	H5X8M	54.00	H5X8	25.50	--
6 x 9	25	H6X9D	51.00	H6X9M	59.50	H6X9	29.00	--
9 x 12	25	H9X12D	65.50	H9X12M	78.00	H9X12	42.00	--

RESEALABLE SEALTITE HOLDERS

Resists Splashes, Spills & Smears

- Heavy duty vinyl holders safeguard their contents from dirt, oil, tears, or being lost
- With a quick slide of the finger, the envelope becomes sealed and water resistant
- Constructed with long-life, clear, 8-gauge vinyl with two length-wise strips of 60 mil magnets (1/16") or strong adhesive strips

Package Your Parts, Documents, Supplies

- Very easy to re-open/close; popular in parts areas, production facilities, offices, warehouses
- One and two grommet-style hole configurations can be customized for only \$0.05 per hole
- Metal reinforced grommet hanging hole is also available for \$0.50 ea, Part # GROM-MET



Re-usable Seal

Common Applications

Small Parts & Supplies
Shop Orders & Job Tickets
Invoices & Shipping Orders
Maintenance & Warranty Cards
Instruction Booklets & Forms
Racks & Shelves
Pallets, Bins & Containers

Holders are slightly larger than the Insert Sizes

Insert Size H" x L"	Pkg Qty	Adhesive Backed		Magnet Backed		Plain Backed	
		Holder Part #	Pkg Price	Holder Part #	Pkg Price	Holder Part #	Pkg Price
3 x 5	25	HZ3X5D	52.00	HZ3X5M	56.50	HZ3X5	32.50
4 x 6	25	HZ4X6D	56.50	HZ4X6M	61.50	HZ4X6	36.00
6 x 9	25	HZ6X9D	67.00	HZ6X9M	75.50	HZ6X9	45.00
9 x 12	25	HZ9X12D	87.00	HZ9X12M	99.50	HZ9X12	63.50

CLEAR CARD HOLDERS TUBULAR STYLE



Side End Opening

No More "I Can't Scan It, It's Torn and Dirty."

- ▶ Ideal for dirty environments where cards need protection
- ▶ Cards slide in the side and are in full view through the non-glare, scannable plastic tube
- ▶ These tough holders will not crack, chip, or fade in indoors

Choice of Three Fasteners

- ▶ Constructed from long-life, firm plastic; yet is also nice in appearance for use in conference rooms, libraries or other office settings
- ▶ To ensure the holder will not easily "fall off" the back has a choice of three fasteners:
 - (1) Foam Tape Adhesive for permanent application
 - (2) Magnetic Rubber for easy relocation
 - (3) VELCRO® hook & loop for moveable locations

Common Applications

Parts & Supplies Shelves
Totes, Bins & Other Containers
Warehouse & Storage Racks
Cabinets, Drawers, Bookcases

Optional Card Colors

White, Yellow, Lime, Blue, Gray,
Salmon, Pink, Red, Gold

NOTE: The VELCRO® Holder includes a hook backing; the loop fastener is sold separately.

Rolls of the loop fastener are available for application to the entire length of the shelf lip or cut for one location. 75' Length roll is \$70.00.

Part #: LOOP-05

Card Height H"	Holder Length L"	Pkg Qty	Adhesive Backed		Magnet Backed		VELCRO® Backed		Optional Cards 20 Sheet Pack Part # *
			Holder Part #	Pkg Price	Holder Part #	Pkg Price	Holder Part #	Pkg Price	
1	2	25	J1X2A	14.80	J1X2M	15.85	J1X2H	17.50	SL1X2
1	3	25	J1X3A	16.85	J1X3M	18.45	J1X3H	20.90	SL1X3
1	4	25	J1X4A	18.95	J1X4M	21.05	J1X4H	24.35	SL1X4
1	6	25	J1X6A	23.10	J1X6M	26.25	J1X6H	31.20	SL1X6
1	12	25	J1X12A	35.55	J1X12M	41.85	J1X12H	51.75	SL1X_
1	36	10	J1X36A	34.15	J1X36M	41.70	J1X36H	53.60	SL1X_
2	2	25	J2X2A	17.65	J2X2M	25.40	J2X2H	20.00	SL2X2
2	3	25	J2X3A	21.15	J2X3M	29.65	J2X3H	24.65	SL2X3
2	4	25	J2X4A	24.65	J2X4M	33.90	J2X4H	29.50	SL2X4
2	6	25	J2X6A	31.65	J2X6M	42.40	J2X6H	38.70	SL2X6
2	12	25	J2X12A	52.65	J2X12M	67.90	J2X12H	66.75	SL2X_
2	36	10	J2X36A	54.65	J2X36M	67.95	J2X36H	71.60	SL2X_

Holders are also available in custom lengths and with plain backing

* See page 11

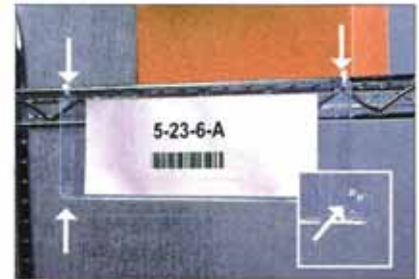
GROMMET-STYLE HOLDERS

Insert Size * H" x L"	Pkg Qty	Four-Hole Style	
		Holder Part #	Pkg Price
3 x 5	25	HG3X54	28.00
4 x 6	25	HG4X64	30.50
3 x 9	25	HG3X94	32.50
4 x 11	25	HG4X114	38.50
8-1/2 x 11	25	HG84X114	53.50

* Holders are slightly larger than Insert Sizes

Can't Use Magnets or Adhesive ?

- ▶ Ideal for freezers, wood shelves, bins, pegboards, or uneven surfaces
- ▶ Rugged 8-gauge, clear vinyl with welded, non-rip seams
- ▶ Hang these four-hole style holders on hooks, screws, nails, or use our *Plastic Ties & Cinch Straps* or *Snap Rings* (see page 12 for more info)
- ▶ Other hole patterns and metal reinforced grommets are available



HEAVY DUTY STITCHED HOLDERS

Insert Size H" x L"	Pkg Qty	Vertical Style	
		Holder Part #	Pkg Price
9 x 6	10	SHS6X9	19.00
11 x 8-1/2	10	SHS84X11	25.00
12 x 9	10	SHS9X12	28.00
14 x 11	10	SHS11X14	36.00

Tough and Rugged

- ▶ Protects documents in high use or harsher areas
- ▶ Heavy 6-gauge, clear vinyl and reinforced with strong sewn, textured black vinyl binding, opens on short side
- ▶ Holders are about 1-1/2" taller & 1" wider than Insert Sizes

Available Options

Magnetic or adhesive strip backing (additional charge)
Special orders: red or neon color binding (minimum order quantity); smaller size 8"H x 5"L



PLASTIC CARD HOLDERS C-CHANNEL STYLE

Fast, Easy Product Moves

- ▶ These popular gray C-channel holders provide easy flexibility for your product additions, relocations, or reorganization by simply sliding out one card and sliding in another
- ▶ So many sizes we can't list them all – from heights of 3/8" - 3" to lengths of 2" - 48" we have a standard or custom size for virtually any shelf lip

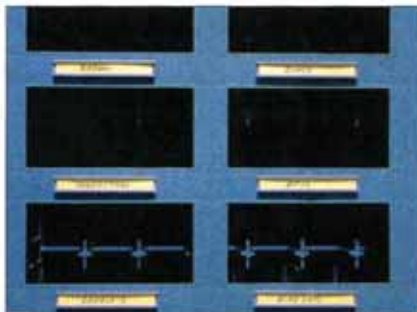


Adhesive and Magnet Backed

- ▶ Commonly utilized for products with high turnover or frequent relocating
- ▶ To relocate both the holders and cards, consider the magnet backed; for more permanent locations, choose adhesive



Line the entire shelf lip, lengths up to 96"



Smaller sizes for identifying slots and bins

VELCRO® and Plain Backed, Too

- ▶ Plain style can be stapled or nailed to wooden shelving, call for pricing
- ▶ Custom lengths are also available

Common Applications

Shelves, Racks, Bookcases, Cabinets,
Bins, Doors, Frames, Drawers, Mail
Slots

Related Products

For similar card holders, see
Magnetic C-Channel Holders on page 8
Card-Stop Holders on page 7
Clear Card Holders Tubular on page 5

Card Insert Height H"	Holder Outside Length L"	Pkg Qty	Adhesive Backed		Magnet Backed		Optional Cards 20 Sheet Pack Part # (see page 11)
			Holder Part #	Pkg Price	Holder Part #	Pkg Price	
3/8	2	25	B03X2A	11.25	B03X2M	15.75	SL03X2
3/8	3	25	B03X3A	13.25	B03X3M	18.50	SL03X3
3/8	4	25	B03X4A	15.00	B03X4M	21.25	SL03X4
3/8	6	25	B03X6A	18.75	B03X6M	26.50	SL03X6
3/8	48	10	B03X48A	39.25	B03X48M	55.75	SL03X_
1/2	2	25	B04X2A	13.00	B04X2M	15.75	SL04X2
1/2	3	25	B04X3A	15.00	B04X3M	18.25	SL04X3
1/2	4	25	B04X4A	17.00	B04X4M	20.75	SL04X4
1/2	6	25	B04X6A	21.25	B04X6M	26.00	SL04X6
1/2	48	10	B04X48A	42.50	B04X48M	53.50	SL04X_
3/4	2	25	B06X2A	12.25	B06X2M	15.00	SL06X2
3/4	3	25	B06X3A	14.25	B06X3M	17.75	SL06X3
3/4	4	25	B06X4A	16.25	B06X4M	20.25	SL06X4
3/4	6	25	B06X6A	20.50	B06X6M	25.75	SL06X6
3/4	48	10	B06X48A	48.30	B06X48M	55.00	SL06X_
7/8	2	25	B07X2A	12.00	B07X2M	14.50	SL07X2
7/8	3	25	B07X3A	14.25	B07X3M	17.25	SL07X3
7/8	4	25	B07X4A	16.50	B07X4M	20.00	SL07X4
7/8	6	25	B07X6A	21.00	B07X6M	25.75	SL07X6
7/8	48	10	B07X48A	52.35	B07X48M	58.00	SL07X_
1	2	25	B1X2A	11.75	B1X2M	15.00	SL1X2
1	3	25	B1X3A	14.00	B1X3M	18.00	SL1X3
1	4	25	B1X4A	16.00	B1X4M	21.00	SL1X4
1	6	25	B1X6A	20.50	B1X6M	27.25	SL1X6
1	36	10	B1X36A	40.00	B1X36M	48.00	SL1X_
1	48	10	B1X48A	53.30	B1X48M	62.75	SL1X_
1-1/4	2	25	B12X2A	12.00	B12X2M	15.25	SL12X2
1-1/4	3	25	B12X3A	14.25	B12X3M	18.50	SL12X3
1-1/4	4	25	B12X4A	16.50	B12X4M	21.50	SL12X4
1-1/4	6	25	B12X6A	21.25	B12X6M	28.00	SL12X6
1-1/4	36	10	B12X36A	42.15	B12X36M	49.75	SL12X_
1-1/4	48	10	B12X48A	56.20	B12X48M	65.25	SL12X_
1-1/2	3	25	B14X3A	14.75	B14X3M	19.00	SL14X3
1-1/2	4	25	B14X4A	17.25	B14X4M	22.25	SL14X4
1-1/2	6	25	B14X6A	22.25	B14X6M	29.00	SL14X6
1-1/2	36	10	B14X36A	45.75	B14X36M	52.00	SL14X_
1-1/2	48	10	B14X48A	61.00	B14X48M	68.25	SL14X_
2	3	25	B2X3A	15.50	B2X3M	21.50	SL2X3
2	4	25	B2X4A	18.00	B2X4M	26.00	SL2X4
2	6	25	B2X6A	23.25	B2X6M	34.50	SL2X6
2	36	10	B2X36A	49.00	B2X36M	65.25	SL2X_
2	48	10	B2X48A	65.30	B2X48M	88.75	SL2X_
3*	4	25	B3X4A	37.00	B3X4M	40.75	SL3X4
3*	5	25	B3X5A	40.75	B3X5M	45.75	SL3X5
3*	6	25	B3X6A	44.75	B3X6M	50.50	SL3X6
3*	48	10	B3X48A	83.50	B3X48M	102.25	SL3X_

Lengths up to 96" are available, contact Customer Service for pricing and minimum order quantities. For lengths over 12" a variance of +/- 1/4" is permissible.

* 3" Height sizes are also available in white for the same prices

VERTICAL CARD-STOP HOLDERS



Use as a Multi-Card Holder

- ▶ Background label affixed to holder to indicate Out of Stock, Re-order Part #, etc. call or email for custom label pricing
- ▶ Additional and custom sizes are also available call for a price quote
- ▶ Perforated Sheets of Insert Cards are available in choice of 9 colors see recommended sizes in chart (rightmost column)

Top Loading Holder for Multiple Cards

- ▶ Convenient slide in & out of cards which extend 1-1/4" above the holder for easy grasping
- ▶ Single nodule at bottom of holder acts as the card stopper
- ▶ Holds from one to four cards of index card stock thickness
- ▶ The medium gray colored, plastic holder is available with either adhesive backing (for more permanent locations) or magnetic backing (for holders that may need to be moved)

Card Insert Size H" x W"	Holder Outside Length H" x W"	Pkg Qty	Adhesive Backed		Magnet Backed		Optional Cards 20 Sheet Pack Part # (see page 11)
			Holder Part #	Pkg Price	Holder Part #	Pkg Price	
3 x 2	2 x 2-1/8	10	BN2X2A	11.60	BN2X2M	15.45	SL2X3
4 x 2	3 x 2-1/8	10	BN2X3A	12.65	BN2X3M	17.20	SL2X4
2 x 3	1 x 3-1/8	10	BN3X1A	13.75	BN3X1M	14.10	SL2X3
3 x 3	2 x 3-1/8	10	BN3X2A	15.00	BN3X2M	15.70	SL3X3
4 x 3	3 x 3-1/8	10	BN3X3A	16.25	BN3X3M	17.30	SL3X4
5 x 3	4 x 3-1/8	10	BN3X4A	17.50	BN3X4M	18.90	SL3X5

Use as a Multi-Card Holder

- ▶ Ideal for holding several copies of the same card data SKU pick cards, package labels, etc.
- ▶ Quick and easy for picking, tracking and moveable items

Use as a Single Card Holder

- ▶ Ideal for locations where the card needs to be changed (stock rotations, seasonal items, etc.)
- ▶ Vertical holder style is also a better fit for certain narrow locations such as rack uprights

HORIZONTAL END-STOP HOLDERS

Sliding Cover Signal



- ▶ Includes fluorescent red and green background colors
- ▶ Ideal for signaling pass/fail, in-stock/re-order, accept/reject, or other status

Nodules at Each End

- ▶ As a signal indicator, the sliding white plastic piece covers half and reveals the opposite half (left and right sides)
- ▶ Background area may include red & green, bar codes, custom printed data, or other indicators
- ▶ Available with adhesive or magnetic backing
- ▶ We understand that unique applications are commonplace we are prepared to customize your holder with other sizes, printed and colored labels

Plain Card Holder



- ▶ Single card holder only no background label or slider
- ▶ Insert card is held securely in place by the end notches
- ▶ Can also be used vertically

Custom Indicator **



- ▶ Includes white sliding cover (labels are not included)
- ▶ Use to indicate any two options (in/out, bounce back reflective label, on/off, etc.)

End-Stop Holder Style	Holder Outside Dimension H" x W" *	Pkg Qty	Adhesive Backed		Magnet Backed	
			Holder Part #	Pkg Price	Holder Part #	Pkg Price
Signal*	2-1/8 x 6-5/8	10	BM2X6A	29.65	BM2X6M	36.50
Signal*	3-1/8 x 6-5/8	10	BM3X6A	34.80	BM3X6M	37.15
Plain	2-1/8 x 6-5/8	10	BNN2X6A	19.85	BNN2X6M	26.70
Plain	3-1/8 x 6-5/8	10	BNN3X6A	24.10	BNN3X6M	26.40

* Sliding cover signal includes fluorescent red/green background colors and sliding white cover.

** Custom printed background labels and other sizes are available for an additional charge.

CARD HOLDER COVERS



Protect Your C-Channel Cards

- ▶ Keep bar code cards and product price labels clean and scanable
- ▶ See-through plastic in a price channel chip design
- ▶ Slides directly over the card into our C-Channel style card holders see pages 6-8
- ▶ Covers are provided in 100' rolls, simply cut into your desired widths
- ▶ Other sizes available upon request call for pricing

Size H"	Length L"	Cover Roll Part #	Roll Price
1/2	100'	BV04X1200	10.00
3/4	100'	BV06X1200	13.00
13/16	100'	CV1X1200	16.00
1	100'	BV1X1200	16.00
1-1/4	100'	BV12X1200	19.00
1-11/16	100'	CV2X1200	28.00
2	100'	BV2X1200	28.00
3	100'	BV3X1200	40.00

MAGNETIC CARD HOLDERS C-CHANNEL STYLE

Moving Products Made Easy

- ▶ C-channel design allows flexibility of shelf space re-organization with easy relocation of the holders or simple replacement of cards by simply sliding them in and out
- ▶ Move the holder without the hassle of peeling or scraping labels

Surprisingly Strong

- ▶ The magnetic, solid rubber construction of these brown holders maximizes the holding power for a variety of warehouse, storage, distribution and production environments
- ▶ These durable magnetic channels can be applied in areas from 0 to 160 degrees F.



Card Insert Height H"	Holder Outside Size H" x L"	Pkg Qty	Holder Part #	Pkg Price	Optional Cards 20 Sheet Pack Part # *
25/64	50' roll	1	C.5X600	18.50	SL035X _
13/16	1 x 2	25	C1X2	5.50	SL065X2
13/16	1 x 3	25	C1X3	7.00	SL065X3
13/16	1 x 4	25	C1X4	8.50	SL065X4
13/16	1 x 6	25	C1X6	11.50	SL065X6
13/16	1 x 12	25	C1X12	20.50	SL065X _
13/16	50' roll	1	C1X600	41.00	SL065X _
1-11/16	1-7/8 x 3	25	C2X3	10.00	SL15X3
1-11/16	1-7/8 x 4	25	C2X4	12.50	SL15X4
1-11/16	1-7/8 x 6	25	C2X6	17.50	SL15X6
1-11/16	1-7/8 x 8	25	C2X8	22.50	SL15X8
1-11/16	1-7/8 x 12	25	C2X12	32.50	SL15X _
1-11/16	50' roll	1	C2X600	65.00	SL15X _
3	3-1/4 x 4	25	C3X4	17.50	SL3X4
3	3-1/4 x 5	25	C3X5	21.25	SL3X5
3	3-1/4 x 6	25	C3X6	25.00	SL3X6
3	3-1/4 x 8	25	C3X8	32.50	SL3X _
3	3-1/4 x 12	25	C3X12	47.50	SL3X _
3	50' roll	1	C3X600	95.00	SL3X _

* See page 11

You Pick the Size

- ▶ Holders may be cut to custom lengths or supplied in a 50' roll for you to cut your own lengths

Common Applications

Racks & Shelves
Steel Beams
Steel Doors & Frames
Steel Equipment
Steel Cabinets
Steel Bins

Related Products

For similar card holders, see magnetic styles of *Plastic Card Holders C-Channel* on page 6 and *Clear Card Holders Tubular* on page 5

Custom cut *Perforated Card Sheets* in 20 sheet packs for \$10.00 see page 11 for sizes and card quantities per pack, available in nine colors (see below)

Optional Card Colors



CLEAR GRIP CARD HOLDERS

See-Through Plastic Holders

- ▶ Securely hold job documents, cards, tickets
- ▶ Easy movement of cards simply pull out the plastic flap and slide in your paperwork
- ▶ Firm grip flap holds from one to several items
- ▶ Clear, non-glare plastic allows scanning and readability

Holder Type	Holder Size * H" x L"	Pkg Qty	Holder Part #	Pkg Price	Optional Cards 20 Sheet Pack Part #
Adhesive	2-1/2 x 4	10	JC2X4D	22.95	SL2X3
Magnetic	2-1/2 x 4	10	JC2X4M	23.50	SL2X3
Adhesive	3-1/2 x 5	10	JC3X5D	27.40	SL3X4
Magnetic	3-1/2 x 5	10	JC3X5M	36.60	SL3X4
Adhesive	3-1/2 x 6	10	JC3X6D	29.50	SL3X5
Magnetic	3-1/2 x 6	10	JC3X6M	39.50	SL3X5
Adhesive	3-1/2 x 9	10	JC3X9D	35.70	SL3X8
Magnetic	3-1/2 x 9	10	JC3X9M	48.25	SL3X8

* Hanging hole style and additional sizes available to fit your inserts



Applications

- ▶ Secure orders, jobs, notices, instructions and other warehouse forms
- ▶ Place holders on: Racks, shelves, Cabinets, bins, Doors, Next to equipment

Three Styles

- ▶ Adhesive strip backed
- ▶ Magnetic strip backed
- ▶ Hanging with two mounting holes at top (call for pricing)
- ▶ Custom sizes available
- ▶ Color datacards see page 11



FLEXIBLE CARD HOLDERS & LABEL MOUNTS

Accidental bumps are OK!

- ▶ Specially designed mounts flex fully back & forth with accidental bumping
- ▶ White plastic mounts with adhesive strip and rounded corners in two styles:
Card Holder for inserting a card in the clear vinyl pouch
Label Mount for attaching an adhesive label

Choice of Viewing Angles



For full adhesion, attaching foot must be placed on a flat, smooth, coated/painted surface at a minimum 65° F.
 For non-flat surfaces (ex: beveled, concave, textured) call Customer Service for adhesive alternatives.



Great for Long Range Scanning

- ▶ Attach under lip or front face of rack or beam with 1" foot
- ▶ Standard angle is 90° from the underneath lip
- ▶ 30° and 240° (angles underneath shelf or rack) plus 60° (angle outside into aisle) are available for upper racks

Custom Angles

- ▶ Other angles can be manufactured to properly fit your racking and optimal scanability call Customer Service for price quote

Card/Label Size H" x L"	Pkg Qty	Card Holder Style		Label Mount Style	
		Part #	Pkg Price	Part #	Pkg Price
2 x 10	25	KBD2X10P	68.75	KBD2X10	35.20
3 x 6	25	KBD3X6P	64.20	KBD3X6	29.95
3 x 10	25	KBD3X10P	76.75	KBD3X10	38.70
4 x 8	25	KBD4X8P	77.00	KBD4X8	38.05
4 x 12	25	KBD4X12P	95.10	KBD4X12	48.25

WIRE DECK CARD HOLDERS & LABEL MOUNTS



Labeling Rack Decking

- ▶ Flexible, white plastic mounts (similar design as above) with rounded corners in two styles:
Card Holder for card insertion
Label Mount for attaching label
- ▶ Displays on rack face beyond front overhang of wire decking
- ▶ Non-foam adhesive will not leave a messy residue on rack

Card/Label Size H" x L"	Pkg Qty	Card Holder Style		Label Mount Style	
		Part #	Pkg Price	Part #	Pkg Price
3 x 6	25	KBWD3X6P	67.25	KBWD3X6	33.00
3 x 8	25	KBWD3X8P	76.50	KBWD3X8	39.00
4 x 6	25	KBWD4X6P	72.75	KBWD4X6	35.75
4 x 8	25	KBWD4X8P	81.00	KBWD4X8	42.05
4 x 12	25	KBWD4X12P	101.00	KBWD4X12	54.15

SHELF LIP LABEL MOUNTS



Custom Labels (see page 15) sold separately

Extend Lip to Accommodate Larger Size Labels

- ▶ Add height to an existing short shelf lip to affix larger labels
- ▶ Plastic mount will flex if bumped
- ▶ Strong adhesive strip across the full width of top back side
- ▶ We make custom sizes quickly, call with specs for a price quote
- ▶ Option: magnetic strip backing

Adhesive Mount Size H" x L"	Pkg Qty	Holder Part #	Pkg Price
1-1/2 x 3-1/4	25	KBF12X3D	18.30
1-1/2 x 4-1/4	25	KBF12X4D	19.30
2-1/4 x 4-1/4	25	KBF2X4D	20.50
3-1/4 x 6-1/4	25	KBF3X6D	25.45
4-1/4 x 8-1/4	25	KBF4X8D	31.90

PLASTIC LABEL MOUNT BLANKS

Do-It-Yourself Mounts

- ▶ Plain, no backing apply a label and place in a card holder or write on with a damp erase pen
- ▶ Choice of three styles: 15 mil white rigid vinyl and 40 mil white or color styrene



40 mil Colors: White, Blue, Red, Yellow, Green

Size H" x L"	Pkg Qty	15 mil White		40 mil White		40 mil Color	
		Part #	Pkg Price	Part #	Pkg Price	Part #	Pkg Price
1-1/4 x 4	50	NK1.25X4	11.25	NQ1.25X4	13.25	NQX1.25X4	19.10
2 x 6	50	NK2X6	16.50	NQ2X6	21.30	NQX2X6	29.95
3 x 10	50	NK3X10	30.00	NQ3X10	42.00	NQX3X10	57.85
4 x 8	50	NK4X8	31.50	NQ4X8	44.30	NQX4X8	60.95
4 x 12	50	NK4X12	43.50	NQ4X12	62.70	NQX4X12	85.75

MAN-DOWN CARD HOLDERS & LABEL MOUNTS

Reading & Scanning for Higher Levels Now Made Easy

- ▶ Eliminate long-range scanning, reduce errors, and improve productivity
- ▶ Easy to view and update place a card or label for each rack level stacked all on one totem holder or mount in a ladder type format

Three Styles Choices

- ▶ The 2-3/4" wide white plastic, adhesive backed units are designed in three styles:
 - 1) **Card Holder** for inserting a card for each level in its own see-through vinyl, scanable pouch (each pouch holds its own 2"x3" location card)
 - 2) **Blank Mount** for attaching your own adhesive labels usually one label for each rack level
 - 3) **Label Mount** which includes the mount with level labels printed and attached (with your data) and ready for placement on the rack, available in both black on white and color (often color coded by level), \$75. minimum order
- ▶ Additional mount sizes and custom label designs are also available

Location Data

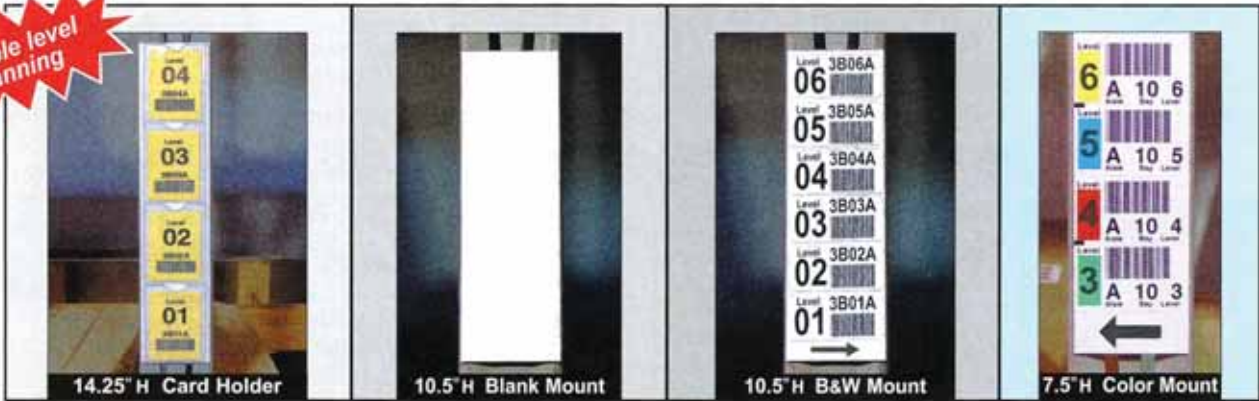
- ▶ Organize codes by level and reduce confusion of what label goes with what product location
- ▶ The pictures and price chart below show our most popular sizes and designs
- ▶ Alternatively, you can create your own totem label layout with your specific location and level data
- ▶ For the *Label Mount* formats, a .jpg multi-level label proof will be emailed for your approval to ensure the data application and design is exactly as you specify

Level Indicator Labels, Too

- ▶ Clearly identify each rack level with a label on each beam face
- ▶ Each label can match the same level indicator and/or the same level color (ex: the number 6 on a yellow background)
- ▶ See page 15 for label sizes



Sample Designs



Levels (# of card holders or labels)	2-3/4" W Vertical Card Holder			2-3/4" W Vertical Mount			2-3/4" W Mount with B&W or Color Label				
	Height H"	Card Holder Part # *	Price Each	Height H"	Blank Mount Part # **	Price Each	Height H"	B&W Mount Part # ***	Price Each	Color Mount Part # ****	Price Each
2	7-1/4	NQ2P26X7D	3.85	4-1/2	NQ26X44D	1.40	4-1/2	NQL26X44D	1.80	NQLC26X44D	2.20
3	10-3/4	NQ3P26X104D	5.30	6	NQ26X6D	1.55	6	NQL26X6D	2.10	NQLC26X6D	2.90
4	14-1/4	NQ4P26X14D	6.90	7-1/2	NQ26X74D	1.70	7-1/2	NQL26X74D	2.60	NQLC26X74D	3.30
5	17-3/4	NQ5P26X174D	8.45	9	NQ26X9D	1.85	9	NQL26X9D	2.80	NQLC26X9D	4.10
6	21-1/4	NQ6P26X21D	10.00	10-1/2	NQ26X104D	2.00	10-1/2	NQL26X104D	3.00	NQLC26X104D	4.30
7	24-3/4	NQ7P26X244D	11.55	12	NQ26X12D	2.15	12	NQL26X12D	3.30	NQLC26X12D	5.10
8	28-1/2	NQ8P26X28D	13.10	13-1/2	NQ26X134D	2.30	13-1/2	NQL26X134D	3.50	NQLC26X134D	5.20

* holder fits *Perforated Cards* Part # SL2X3 - see page 11

** mount fits *Adhesive Labels* up to 2-5/8" W - see page 11

*** includes custom black on white label applied to a mount

**** includes custom color(s) label applied to a mount



Note: One side is magnetized, apply label to other side. Try a free sample!

MAGNETIC LABEL MOUNTS

Standard Magnet Roll

- ▶ Use plain backed magnet for applying location labels

Hi-Energy Magnet Roll

- ▶ Provides additional adherence in freezers, outdoor storage, and harsh areas
- ▶ Effective in most locations, label material and other conditions may affect magnetic performance

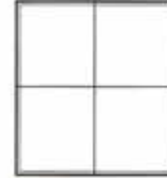
Width W"	# Ft Roll L'	Standard Magnet		Hi-Energy Magnet	
		Roll Part #	Price	Roll Part #	Price
3/4	100	TP34X100	33.50	n/a	n/a
1	100	TP1X100	43.50	TH1X100	140.00
1-1/2	100	TP15X100	60.50	n/a	n/a
2	100	TP2X100	77.00	TH2X100	240.00
3	100	TP3X100	160.00	TH3X100	320.00

You cut the 100' roll to your lengths or we can cut it for only \$0.10 per cut

ADHESIVE LABEL SHEETS

Nobody Likes Paper Jams

- Some adhesive labels "gum up", leave residue, and jam the feed mechanisms of your equipment - these white labels are designed for reliable feed performance in laser printers, ink jet printers, and photocopiers
- Each sheet has a 1/32" outer border trimmed to avoid accumulation of label adhesive inside your printer and thus minimizes jams and problems
- Packaged in 100 sheet packs



White, Permanent Adhesive on 8-1/2" x 11" Sheets

Special Option Sheets

Label Size H" x L"	Qty per Pack	100 Sheet Pack		Label Size H" x L"	Qty per Pack	100 Sheet Pack		Label Size H" x L"	Qty per Pack	100 Sheet Pack	
		Part #	Price			Part #	Price			Part #	Price
1 x 2-5/8	3000	SA1X262	28.00	3-1/3 x 4	600	SA333X4	28.00	Clear, Permanent Adhesive 8-1/2" x 11"			
1 x 2-5/16	3000	SA1X283	28.00	2-3/4 x 4-1/4	800	SA275X425	28.00	1 x 2-5/16	3000	SA1X283C	105.00
1-1/2 x 2-5/16	2100	SA15X283	28.00	5-1/2 x 4-1/4	400	SA55X425	28.00	White, Removable Adhesive 8-1/2" x 11"			
1 x 4	2000	SA1X4	28.00	3-2/3 x 8-1/2	300	SA366X85	28.00	1 x 2-5/16	3000	SA1X283R	42.00
1-1/2 x 4	1200	SA15X4	28.00	5-1/2 x 8-1/2	200	SA55X85	28.00	White, Auto A.I.A.G. Format 8-1/2" x 14"			
2 x 4	1000	SA2X4	28.00	11 x 8-1/2	100	SA11X85	28.00	4-1/4 x 6-1/2	400	SA13X425	40.00

PERFORATED CARD SHEETS

Differentiate Products by Card Color

- 20 sheet packs in a choice of 9 colors
- 8-1/2" x 11" index card stock feeds through most laser printers, copiers, typewriters

- Sheets perforated in both directions for easy separation into cards after printing
- See website to print cards using templates
- Sizes 3/8" x 2" up to 8-1/2" x 11" available

Label Printing

- We'll print your labels for you!
- Color and black & white laser printing
- Call for pricing or more information



White or Color Card Sheets

Card Size H" x L"	For Holder Part # Series	Cards per Pack	20 Sheet Pack		Card Size H" x L"	For Holder Part # Series	Cards per Pack	20 Sheet Pack	
			Part #	Price				Part #	Price
1/2 x 3	B,H,KP	800	SL04X3	10.00	1-1/2 x 4	B,H,KP	240	SL14X4	10.00
3/4 x 3	B,H,KP	520	SL06X3	10.00	1-11/16 x 3	C	240	SL15X3	10.00
3/4 x 4	B,H,KP	520	SL06X4	10.00	1-11/16 x 4	C	240	SL15X4	10.00
13/16 x 3	C	480	SL065X3	10.00	1-11/16 x 6	C	120	SL15X6	10.00
13/16 x 4	C	480	SL065X4	10.00	2 x 3	B,H,J,KP	200	SL2X3	10.00
13/16 x 6	C	240	SL065X6	10.00	2 x 4	B,H,J,KP	200	SL2X4	10.00
7/8 x 3	B,H,KP	440	SL07X3	10.00	2 x 6	B,H,J,KP	100	SL2X6	10.00
7/8 x 4	B,H,KP	440	SL07X4	10.00	3 x 4	B,C,H,KP	120	SL3X4	10.00
1 x 3	B,H,J,KP	400	SL1X3	10.00	3 x 5	B,C,H,KP	60	SL3X5	10.00
1 x 4	B,H,J,KP	400	SL1X4	10.00	3 x 6	B,C,H,KP/B	60	SL3X6	10.00
1-1/4 x 3	B,H,KP	320	SL12X3	10.00	3 x 8	B,C,H,KP	60	SL3X8	10.00
1-1/4 x 4	B,H,KP	320	SL12X4	10.00	3 x 8-1/2	B,C,H,KP	60	SL3X8.5	10.00
1-1/2 x 3	B,H,KP	240	SL14X3	10.00	4 x 6	H,KP	40	SL4X6	10.00



Card Colors

- WHITE
- YELLOW
- LIME
- BLUE
- SALMON
- GRAY
- PINK
- RED
- GOLD

B = C-Channel Plastic Card Holders, KP = Wire Rack Tags, J = Tubular Plastic Card Holders, C = C-Channel Magnetic Rubber Card Holders
H = All Rack, Shelf, Sealite and Grommet-Style Vinyl Card & Ticket Holders, KB = Flexible Card Holders

PLASTIC CARD SHEETS

Durable, Laser Printable, Perforated Sheets

- Plastic cards are oil, water and tear resistant for harsher environments
- Popular applications include tote and bin identification, bar coding racks, Kanban data, and outdoor product locations
- 8-1/2" x 11" plastic stock feeds through most laser printers
- White, 8 mil, synthetic plastic cards in larger, common card holder sizes are sold in 10 perforated sheet packs
- Sheets are perforated in both directions for easy separation into cards
- Additional sizes are available, call with dimension requirements

* full sheet, not perforated

Plastic Card Size H" x L"	For Holder Part # Series	Cards per Pack	10 Sheet Pack	
			Part #	Price
2 x 4	B,H,J,KP	100	SLP2X4	19.00
3 x 5	B,C,H,KP	30	SLP3X5	19.00
3 x 8	B,C,H,KP	30	SLP3X8	19.00
4 x 6	H,KP	20	SLP4X6	19.00
4 x 8	H,KP	20	SLP4X8	19.00
8-1/2 x 11	n/a	10*	SLP84X11	11.50

WIRE RACK LABEL TAGS

Flat Tags for Adhesive Labels

Label Size H" x L"	Pkg Qty	Label Tag Part #	Pkg Price	Optional Labels 100 Sheet Pack Part # *
1/2 x 3	50	K.5X3	21.95	--
1 x 3	50	K1X3	23.35	SA1X283
1 x 4	50	K1X4	29.10	SA1X4
1-1/2 x 4	50	K14X4	25.85	SA15X4
2 x 4	50	K2X4	27.65	SA2X4
2 x 6	50	K2X6	30.65	--
3 x 5	50	K3X5	33.45	SA275X425
3 x 6	50	K3X6	35.70	--
4 x 4	50	K4X4	34.75	SA333X4
4 x 6	50	K4X6	40.75	--
4 x 8	50	K4X8	46.75	SA366X85
6 x 5	50	K6X5	46.40	SA55X425
6 x 9	50	K6X9	64.40	SA55X85

For Labels



For Cards

Each tag includes two 4" cinch straps for attachment

Great for Freezers

- Wire decks and shelves in freezers and other cold storage units are popular locations for these tags
- Use on containers requiring identification marking which are not conducive to magnetic or adhesive labeling
- More secure than "snap-on" holders which can easily be "snapped off" due to moisture or getting bumped

Your Choice: Labels or Cards

- Designed in two styles: flat surface for applying an adhesive label or with a top-loading pouch for inserting a card
- Constructed of white, .015" rigid vinyl with two hanging holes in the upper corners

Notes: Tags are slightly larger than the size dimensions in the chart. **Four-hole and other hole patterns are available.** Long 14" straps and snap rings are described below.

Common Applications

Wire Decking & Wire Baskets Freezer & Cold Storage Racks
Pallets, Totes & Bins No-lip Shelves or Pegboards

Attachment Options

- Two 4" cinch straps are included, upgrade to 8" or 14" ties
- Replace cinch straps with *Plastic Snap Rings*, see below
- Replace cinch straps with *Metal S-Hooks*, see below

Pouch Tags for Card Insertion

Card Size H" x L"	Pkg Qty	Card Tag Part #	Pkg Price	Optional Cards 20 Sheet Pack Part # *
3/4 x 1-7/8	50	K15X07P	61.65	SL06X17
3/4 x 4	50	K4X1P	65.15	SL06X4
1-3/8 x 4	50	K4X13P	68.80	SL12X4
2-1/4 x 4	50	K4X22P	75.15	SL2X4
3-1/4 x 5	50	K5X32P	87.75	SL3X5
4-1/4 x 6	50	K6X42P	102.30	SL4X6
4-1/4 x 8	50	K8X42P	115.85	SL4X8
5 x 7	50	K7X5P	120.90	--
8-1/2 x 11	25	K12X9P	118.65	SL84X11

* See page 11

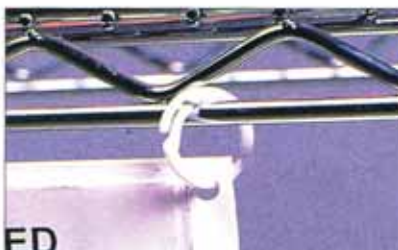
PLASTIC TIES & CINCH STRAPS



It's a cinch now available in three convenient sizes: 4" for tags and smaller attachments; 8" for uprights, equipment and parts; and 14" for poles, posts and larger mountings. Additional sizes are available upon request.

Strap Length L"	Pkg Qty	Strap Part #	Pkg Price
4	100	KS3	3.00
8	100	KS8	10.00
14	100	KS14	20.00

PLASTIC SNAP RINGS



Snap-on/Snap-off, re-usable, 3/4" diameter rings are designed for tags that may need to be relocated or to quickly hold several items together.

Ring Size D"	Pkg Qty	Ring Part #	Pkg Price
3/4	100	KR	15.00

METAL S-HOOKS



A stronger and more durable alternative to plastic straps and rings, these versatile S-Hooks hang signs, card holders and other warehouse items.

S-Hook Size H"	Pkg Qty	Tag Part #	Pkg Price
1	25	QSH	2.00

INVENTORY TAGS

Inventory Tags - 2-Part Style



Pre-Numbered Tags

- ▶ Accurately control inventory turnover and parts status
- ▶ Ideal to receiving, stocking, repairing or moving stock
- ▶ Maintain records both on product location and for recordkeeping (with tear-off paper or stub)
- ▶ Standard 6-1/4" x 3-1/8" #8 tag size with reinforced hole at top
- ▶ Tag packages are conveniently pre-numbered see sequence choices below

Tie Wires Included

- ▶ Each package includes 500 or 1000 unattached tie wires

Inventory Tags - Stub Style



Tag Style (unattached wires included)	Tag Size H" x L"	Qty	Tag Part #	Pkg Price
2-Part	6-1/4 x 3-1/8	500	TTP	119.00
Stub	6-1/4 x 3-1/8	1000	TTS	138.00

Available Options

- ▶ For order of 5,000 or more, additional number sets may be ordered
- ▶ Custom content, design and other number sequences

Carbonless 2-Part Tags

- ▶ Top white paper sheet is perforated for easy removal
- ▶ Bottom card is 10 pt. manila card stock to remain on location
- ▶ Choice of starting tag # in pre-numbered sequence (packs of 500):
Begin: 000 500 1000 1500 2000 2500 3000 3500 4000 4500
End: 499 999 1499 1999 2499 2999 3499 3999 4499 4999

Perforated Stub Tags

- ▶ Both tear-off stub and remaining card are pre-numbered
- ▶ Card is 10 pt. manila stock with reinforced hole
- ▶ Choice of starting tag # in pre-numbered sequence (packs of 1000):
Begin: 000 1000 2000 3000 4000
End: 999 1999 2999 3999 4999

WAREHOUSE LABEL MOUNT TAGS



White plastic tag with 3" cinch strap to attach a label or to write-on with a *Damp-Erase Pen* (see page 20). Ideal for your inventory, ID, inspection, safety, etc. Custom sizes and holes upon request.

Tag Size H" x L"	Qty	Tag Part #	Pkg Price
4-1/2 x 1-1/2	25	KT44X14	12.00
6-1/2 x 3-1/2	25	KT64X34	16.75

ONE-PIECE TAGS

The cinch strap is molded into the center top of the plastic face to form a one-piece tag. Write-on with a *Damp-Erase Pen* or attach a small adhesive label.

Clear 1"x3" Face with Short Strap



Write directly on the tag



Color 2"x3" Face with Long Strap



Available Colors:



Face H" x L"	Strap L"	Color Choices	Pkg Qty	Tag Part #	Pkg Price
1 x 3	1-1/2	Clear only	25	G3X3	9.00
2 x 3	6	6 colors	25	G3X6	21.00
2 x 3	9	6 colors	25	G3X9	29.00

WAREHOUSE POUCH TAGS



Clear vinyl, protective card holder on a plastic tag with a single centered hanging hole. A long 14" cinch strap is included. Other pouch, tag and strap sizes are available upon request.

Insert Size H" x L"	Qty	Tag Part #	Pkg Price
4 x 1	25	KT1X4P	34.75
4 x 2	25	KT2X4P	37.25
5 x 3	25	KT3X5P	42.25

HOW TO SPEC YOUR CUSTOM LABELS

We Can Help! Throughout the years of creating custom labels for thousands of customers, we have gained valuable experience to make it easy for you.

TEXT

Label size is usually limited by the text character size (height and number of characters) plus a barcode, if any. Select a text size for easy readability for example: a label on the top level of a rack might need to be 3" high to be readable from the floor. Make a sketch of the label layout and text size you will need. Character width is generally 86% of character height including spacing (ex: ten 1" high characters would require 8.6" of width). Text width can be compressed ("squeezed") to fit in a shorter space, but this will reduce readability.

BARCODE (if any)

The barcode length will be determined by four factors:

Character set to be encoded – all numbers, alphanumeric, alphanumeric plus special characters, etc. This set determines the choices of barcode symbology (type of barcode). The three most popular for warehouse applications are:

Code 39 (3 of 9) – 0-9, A-Z and ,./\$/% and space

Code 128 (USS 128):

Code A – upper case alphanumeric plus control and special characters

Code B – upper and lower case alphanumeric plus special characters

Code C – 0-9 and special characters only

Interleaved 2 of 5 – numeric 0-9 only

Generally the simpler your character set (like 0-9 only), the thicker the bars can be which gives greater scan distances.

Scanning distances – generally, the longer the scan distance, the thicker the bars (referred to as density) in the barcode and thicker bars increase barcode length. Your scan gun specs will provide

the barcode density, measured in the mil width of the narrowest bar, to achieve a specific scan distance. There should also be a minimum scan distance for a given gun.

Scan gun specifications – guns have differing sensitivities and ranges depending on model electronics and optics. See the scan distance specs (in a graphic form) on the spec sheet.

Label material – use white label material for shorter distances and silver retro-reflective for longer distances (usually 15-35 feet for long range scanners). Scan gun specs will normally specify this.

Barcode height does not affect scan distance, only ease in hitting the barcode when sweeping the scan beam.

DATA SUBMISSION

If your labels will have variable data (each label different), please submit the data on an Excel spreadsheet in the following format:

- Each row corresponds to one label and each column corresponds to a data element (text, barcode, arrow, etc.) on that label
- Place the barcode data in the first column
- Place the human readable (text) in the next column(s)
- If using an arrow or other symbol, place a text word describing it in the next column. Do NOT use an actual symbol (such as an arrow image) or colored cells as we cannot convert them.

Sample:	A	B	C
1	Barcode	Human Readable	Arrow
2	A1234A	A-123-4-A	Down
3	A1234B	A-123-4-B	Up
4	A1234C	A-123-4-C	Up

Please supply the data file in one continuous list in the sequence that you want the labels printed on the roll.

NOTE: We recommend reviewing your label requirements with our Customer Service Department especially if you are unsure about any of the above steps or if you are displaying a bar code or graphic image. For new custom label orders to ensure your complete satisfaction, we will email a label proof using your data for your approval prior to printing and shipping the entire order.

RETRO-REFLECTIVE LABELS



Long Range Scanning

High Level Racks

- ▶ Long range scan to upper levels
- ▶ Minimum order of \$75. per size or design

Specific Materials

- ▶ Retro-reflective offers increased scan range
- ▶ Protective clear overlaminate is water resistant
- ▶ Custom lengths to 25" available

Label Size H" x L"	Retro-Reflective		Add'l Color Price @
	Part #	Price Each	
2 x 6	LBR2X6	1.10	.12
2 x 8	LBR2X8	1.45	.16
2 x 10	LBR2X10	1.80	.19
3 x 5	LBR3X5	1.08	.13
3 x 6	LBR3X6	1.29	.14
3 x 8	LBR3X8	1.70	.19
3 x 10	LBR3X10	2.12	.20
4 x 8	LBR4X8	2.22	.24
4 x 10	LBR4X10	2.76	.26
4 x 12	LBR4X12	3.31	.31

COLD TEMPERATURE LABELS



Cold Rated Labels

- ▶ Can use on racks in freezers and refrigerators
- ▶ Minimum order of \$75. per size or design

Special Materials

- ▶ Synthetic material construction with a protective clear overlaminate
- ▶ Special adhesive allows label to be applied to -10° F.

Label Size H" x L"	Cold Temperature		Add'l Color Price @
	Part #	Price Each	
1 x 3*	LBC1X3	.20	.04
1 x 4*	LBC1X4	.22	.06
1 x 6*	LBC1X6	.34	.07
2 x 3	LBC2X3	.36	.08
2 x 4	LBC2X4	.37	.08
2 x 6	LBC2X6	.54	.12
2 x 8	LBC2X8	.71	.16
2 x 10	LBC2X10	.85	.19
3 x 5	LBC3X5	.60	.13
3 x 6	LBC3X6	.69	.14
3 x 8	LBC3X8	.90	.19
3 x 10	LBC3X10	.95	.20
4 x 8	LBC4X8	1.10	.24
4 x 10	LBC4X10	1.21	.26
4 x 12	LBC4X12	1.44	.31

* Trim size is 1/16" less

BAR CODE AND CUSTOM WAREHOUSE LABELS



Tough Laminated Labels for any Warehouse Location

- ▶ Lamination protects against common splashes, bumps, dirt and sunlight
- ▶ Premium label polyester is a strong, tear-resistant material

Bar Code Labels

- ▶ Use your existing coding system and simply output the label data to us
- ▶ Color code rack level, aisle, row, product type for scanning and human readable

Custom Designs

- ▶ Sequential numbers, SKUs, product data, warning info you define it, we print it
- ▶ Tough, anti-tear stickers text messages, symbols, arrows (see also page 17)

Our Premium Label
Completely Sealed & Protected

Clear Polyester Overlaminant
Printed Ink Image (bar code)
White Polyester Foundation with Self-Adhesive
Peel Off Liner

No Typical Set-up Charges or Prep Fees!

- ▶ Simply provide a compatible data file (Excel is preferred) from a popular bar code, spreadsheet or database program and we'll convert it to our print format
- ▶ Multiple level labels, complex label field formats, and other non-standard formats may incur a one-time formatting or data conversion charge (usually only \$50-\$100)

Short Label Runs Available - No Minimum Quantities!

- ▶ Order 20,000 labels or just 2 labels we print what you need
- ▶ No set-up fees on every order, no minimum order of 100 or 500 or 1,000 labels our only stipulation is a minimum order of \$75 per label size, design or colors

Print Multiple Colors, Too

- ▶ Price per label includes one color: Black, Red, Blue, Green or Yellow
- ▶ Black is printed for all bar codes; colors are suggested for human-readable content. Up to four colors can be printed on each label.

Other Label Options

- ▶ Cold temperature labels for use in cold storage areas see page 14
- ▶ Custom sizes available \$50-\$100 size charge
- ▶ Magnetic Labels, many sizes see page 16

* Trim size is 1/16" less

Two Laminated Styles - Choose the Best One for Your Facility

Style	Standard	Premium
Material	Synthetic with matte overlaminant	Polyester with clear overlaminant
Rating	Very Good	Best
Sample Areas	Shelves, racks and bins with minor dirt and bumping; water resistant	Indoor/outdoor, protects against oils and solvents, water tight seal (tote wash)

Label Size H" x L"	Standard		Premium		Add'l Color Price @
	Part #	Price Each	Part #	Price Each	
1 x 3"	LBS1X3	.13	LBP1X3	.20	.04
1 x 4"	LBS1X4	.16	LBP1X4	.22	.06
1 x 6"	LBS1X6	.21	LBP1X6	.34	.07
2 x 3	LBS2X3	.22	LBP2X3	.36	.08
2 x 4	LBS2X4	.23	LBP2X4	.37	.08
2 x 6	LBS2X6	.32	LBP2X6	.54	.12
2 x 8	LBS2X8	.42	LBP2X8	.71	.16
2 x 10	LBS2X10	.50	LBP2X10	.85	.19
3 x 5	LBS3X5	.37	LBP3X5	.60	.13
3 x 6	LBS3X6	.42	LBP3X6	.69	.14
3 x 8	LBS3X8	.55	LBP3X8	.90	.19
3 x 10	LBS3X10	.59	LBP3X10	.95	.20
4 x 8	LBS4X8	.65	LBP4X8	1.10	.24
4 x 10	LBS4X10	.72	LBP4X10	1.21	.26
4 x 12	LBS4X12	.86	LBP4X12	1.44	.31



MAGNETIC LABELS



Durable Laminated Label Style

- ▶ Strong, premium polyester with clear overlaminate and water tight seal

Label Size H" x L"	Magnetic Label		Add'l Color Price @
	Part #	Price Each*	
1 x 3	LMP1X3	0.75	.03
1 x 4	LMP1X4	0.80	.03
1 x 6	LMP1X6	1.00	.04
2 x 3	LMP2X3	1.05	.05
2 x 4	LMP2X4	1.10	.06
2 x 6	LMP2X6	1.45	.08
2 x 8	LMP2X8	1.80	.11
2 x 10	LMP2X10	2.25	.13
3 x 5	LMP3X5	1.50	.11
3 x 6	LMP3X6	1.75	.12
3 x 8	LMP3X8	2.15	.16
3 x 10	LMP3X10	2.35	.20
4 x 8	LMP4X8	2.55	.21
4 x 10	LMP4X10	3.35	.25
4 x 12	LMP4X12	3.90	.30

Easy Repositioning

- ▶ Bar code or custom label on a magnet allows for quick use of space re-allocations
- ▶ Quickly and easily optimize shelf space, man-down scanning, or bin identification
- ▶ Can also organize by unique ink or magnet colors for differentiating rack levels, product lines, or other characteristics to improve accuracy

No Set-up Fees, No Minimum Quantities

- ▶ Provide bar code, product location data, or human readable text in a compatible text format (Excel preferred)
- ▶ Order 20,000 or just 20 we just print what you need; only a minimum order value of \$95, per label magnet size or color
- ▶ Multiple level labels or complex design formats may incur a one-time prep charge (usually only \$50.-\$100.)

Available Options

- ▶ Retro-reflective or synthetic material with matte overlaminate call for pricing
- ▶ Choice of 13 ink colors (see page 19) and 11 magnet colors (see page 2)

NOTE: Magnets are slightly larger than label sizes

* Price for a magnetic label includes black printing on a white label and magnet. For additional colors, see rightmost column.



RACK MAXIMUM LOAD MARKERS

Indicate permissible weights on warehouse racks

- ▶ Provide maximum loads safety warning on all racks and shelves
- ▶ Comply with manufacturer's specifications

Markers available in three styles

- ▶ Adhesive Printed Label synthetic paper stock
- ▶ Printed Label Magnet label on a flexible magnet
- ▶ Printed Label Sign label on a plastic mount

Three popular marker placements

- ▶ Rack cross beam apply a label or magnet
- ▶ Rack end cap apply a label to a sign or other surface
- ▶ Rack upright apply a label, magnet or adhesive mounted sign



Label text content

- ▶ Pre-printed standard maximum permissible text (red & black lettering on a white background) with blank areas to write in Max Load, Avg Load, and Max per Bay weights (provided by your rack manufacturer) plus blank area at bottom for company name
- ▶ Write in weights with a permanent marker or apply your own P-touch labels
- ▶ Custom printed label text can include weights; minimum order of 100 pieces

Labels, Magnets and Signs

Available Options

- ▶ Yellow, blue, red or green sign background also available (additional \$0.15 per label)
- ▶ Custom sizes, colors, designs

* Sign includes adhesive strips for mounting

** Sign includes adhesive strips and 4 holes for mounting (hardware not included)

Size H" x W"	Style - Placement	Pre-printed			Custom (minimum of 100)		
		Part #	Pkg Qty	Pkg Price	Part #	Qty	Price Each
9 x 2-5/8	Label - upright	LLP9X25	100	75.00	LLC9X25	1	0.90
2-5/8 x 9	Label - beam	LLP25X9	100	75.00	LLC25X9	1	0.90
2-5/8 x 9	Label - end cap	LLP25X9	100	75.00	LLC25X9	1	0.90
9 x 2-3/4	Magnet - upright	LLP9X26M	10	34.00	LLC9X26M	1	4.10
2-3/4 x 9	Magnet - beam	LLP26X9M	10	34.00	LLC26X9M	1	4.10
9 x 2-3/4	Sign - upright *	LLP9X26QD	10	27.50	LLC9X26QD	1	3.30
2-3/4 x 10	Sign - end cap **	LLP26X10QD4H	10	32.50	LLC26X10QD4H	1	3.90

PROPERTY ID & ASSET TAG LABELS

2-Color* Label Size H" x L"	Tamper-Evident Silver Checker		Protective White Polyester	
	Part #	Price Each	Part #	Price Each
3/4 x 1-1/2	LBA06X14	0.75	LBB06X14	0.60
3/4 x 2	LBA06X2	0.85	LBB06X2	0.68
1 x 2	LBA1X2	0.95	LBB1X2	0.76

* Barcode/text is black. Background colors: yellow, orange, magenta, red, lavender, cyan, blue, green, dark green, purple, brown or black

Identify Property & Assets, Deter Tampering

- ▶ Maintain records usage, insurance, accounting
- ▶ Durable laminated polyester with self-adhesive
- ▶ Price includes 2 colors with or without a bar code
- ▶ No set-up charges! 200 label minimum required
- ▶ Specify ID number sequence in data supplied



Tamper-Evident Style

The silver checker pattern shows if silver label is lifted

Protective Style

OR Overlaminated white label, abuse-resistant (no pattern)

Laminate protected white label

When ordering, select a background color AND one of the popular designs below (ex: P2) or provide a your own layout or sketch



P1



P2



P3



P4



P5



P6



P7



P8

COLOR DOTS



Small, Color Coding Circles

- ▶ Self-adhesive, round stickers
- ▶ Mark stock for dates, counts, quality, status (OK - Do Not Use, Accept - Reject, Yes - No, etc.) or other operations
- ▶ Conveniently protect and access dots in the clear vinyl pouch (included)
- ▶ Long lasting colors on synthetic material
- ▶ Choice of 13 standard colors and 4 vibrant fluorescent colors

Dot Size Diam.**	# Dots per Sheet	Total # of Dots	5 Sheet Pack	
			Part #	Pkg* Price
1/2	30	150	LSB04DP	10.00
3/8	48	240	LSB03DP	10.00
1/4	80	400	LSB02DP	10.00

*Includes 5 sheets of dots packaged in a clear vinyl pouch

Standard: White, Yellow, Orange, Red, Magenta, Lavender, Cyan, Green, Dark Green, Blue, Purple, Brown, Black
Fluorescent: Yellow, Pink, Green, Orange

ARROW LABELS

Directional Indicators

- ▶ Reduce stocking, picking and inventory errors
- ▶ Improve speed and efficiency

Use with Product Location Labels

- ▶ Place next to your bar code label to clarify the proper product location
- ▶ Use with a Man-Down multi-level label to indicate which side of the rack upright (left, right) is the applicable product location space

Tear-Resistant

- ▶ Printed on a strong synthetic material (not paper) using a long lasting, resin ink

Provided on a Convenient Roll

- ▶ Our standard Pre-Printed Arrows are stocked in rolls of red and black
- ▶ Custom Printed Arrows are also available if you prefer another color (see all 17 color choices on page 19) or if you would like a different arrow font design



1" x 1"



1" x 3"

Size H" x L"	Qty per Roll	Pre-Printed		Custom Printed	
		Roll Part #	Roll Price	Roll Part #	Roll Price
1 x 1	250	LSA1X1	15.00	LSAS1X1	18.00
1 x 2	250	LSA1X2	20.00	LSAS1X2	24.00
1 x 3	250	LSA1X3	25.00	LSAS1X3	30.00
1 x 4	250	LSA1X4	32.50	LSAS1X4	39.00
2 x 3	250	LSA2X3	35.00	LSAS2X3	42.00
3 x 5	100	LSA3X5	29.00	LSAS3X5	35.00

Additional sizes and label materials available see also page 15

WRITE-ON WAREHOUSE LABELS

Use Pencils, Pens or Markers!

- ▶ Save time and increase accuracy by color-coding your warehouse for organizing receiving, stocking, inventory, picking and shipping
- ▶ Write counts, dates, initials, etc. directly on these adhesive labels
- ▶ Special fluorescent paper stock has a reliable writing surface

Choice of Blank Labels or Custom Labels

- ▶ Select from a fluorescent colored blank label or create your own custom printed label for your warehouse operations
- ▶ Choose from a variety of popular sizes and vibrant colors
- ▶ See our heavy duty *Label Dispensers* below for label rolls

Blank Fluorescent Labels



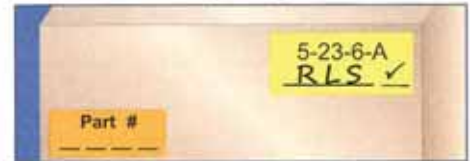
Size H" x L" or D"	Qty per Roll	Blank		Custom Printed	
		Roll Part #	Roll Price	Roll Part #	Roll Price
1 x 3	500	LFB1X3	15.00	LFS1X3	19.00
1 x 4	500	LFB1X4	20.00	LFS1X4	28.00
1 x 6	500	LFB1X6	25.00	LFS1X6	32.00
2 x 6	250	LFB2X6	25.00	LFS2X6	35.00
2 x 10	250	LFB2X10	40.00	LFS2X10	56.00
3 x 5	250	LFB3X5	32.50	LFS3X5	43.50
3 x 6	250	LFB3X6	37.50	LFS3X6	50.00
3 x 8	250	LFB3X8	50.00	LFS3X8	64.50
3 x 10	250	LFB3X10	62.50	LFS3X10	82.00
4 x 8	250	LFB4X8	65.00	LFS4X8	89.50
4 x 10	250	LFB4X10	80.00	LFS4X10	108.00
4 x 12	250	LFB4X12	95.00	LFS4X12	131.50
3/4" diam.	500	LFB06	15.00	LFS06	23.00
1" diam.	500	LFB1	16.00	LFS1	24.00
1-1/2" diam.	500	LFB14	25.00	LFS14	35.00
3" diam.	500	LFB3	45.00	LFS3	65.00

Custom Printed Write-on Labels

Made to Order! Call for a Price Quote

- ▶ You tell us what you want printed and we will produce them for you in only a few days
- ▶ There are no set-up charges for standard bar codes, sequential numbering or lettering
- ▶ A one-time design preparation fee may be applicable for graphics (normally only about \$50-\$100)
- ▶ Price includes one alphanumeric message of your choice per roll

Sample Designs



Note: Fluorescent colors of actual labels are brighter than those pictured here

MOVEABLE UNIT LABELS

Label Size H" x L"	Qty per Roll	Paper Labels *	
		Roll Part #	Roll Price
1 x 2	1000	LBU1X2	36.00
1 x 3	1000	LBU1X3	48.00
1 x 4	1000	LBU1X4	60.00
2 x 4	1000	LBU2X4	108.00

* Options: additional sizes and colors

Track Progress of Items by Location

- ▶ Sequential numbering with bar code
- ▶ Self-sticking to cartons, boxes, packages, totes, trays, etc.
- ▶ Printed on a tear resistant synthetic material, not paper

Custom Printed to Your Format Design

- ▶ No set-up charges!
- ▶ Price includes black one-color (with or without bar code)
- ▶ 1000 minimum label roll quantity per sequence
- ▶ Specify number sequence in data supplied

Sample format, printed 3-up on a roll



DRY ERASE MARKERS & DAMP ERASE PENS



Top Quality

- ▶ Warehouse black markers and pens
- ▶ Red, blue and green available upon request
- ▶ Includes 4 per pack

Point Tip Size W"	Ink Erase	Part #	Price Pkg 4
Wide Marker	Dry	DRW4	10.50
Fine Marker	Dry	DRF4	10.50
Med. Pen* .040"	Damp	DAM4	12.30
Fine Pen* .025"	Damp	DAF4	12.30
Super Pen* .015"	Damp	DAS4	12.30
Standard Quality**	Damp	P1BK4	6.00

* Premium Quality ** Standard in Black only

LABEL DISPENSERS

12" Wide Multi Roll



4" Wide Single Roll



Convenient Sticker Organizer

- ▶ Quickly and easily distribute your stickers and inventory marking labels
- ▶ Avoid stickers "sticking to the wrong things" reducing hassles and saving time
- ▶ Heavy duty metal construction
- ▶ Dispensers can be wall mounted or placed on a tabletop

Size # Rolls	Qty	Unit Part #	Unit Price
Single	1	LD4	49.00
Multiple	1	LD12	83.00

Extra 3" cores Part #: SPOOL, \$5.00/pair

WAREHOUSE COLOR STICKERS

TEAR-RESISTANT Material with Long Lasting Inks!

- ▶ Printed on a high quality synthetic material, not low quality paper
- ▶ Increase productivity and accuracy by color-coding your warehouse
- ▶ Available in 17 vibrant colors and four circle diameters (fluorescent colors and additional sizes are also available)
- ▶ Select from a colored blank circle, pre-printed for commonly utilized functions, or custom printed for your specific needs

Circles for Most Common Warehouse Operations

- ▶ Numbers, Days, Months, Quarters label times and processes
- ▶ Inventory & Stocking organize, count and control stock
- ▶ Quality Control assure accuracy and satisfaction objectives
- ▶ Inspection review products, orders, actions
- ▶ Handling manage product and material care and movement
- ▶ Colors plain, colored stickers to designate whatever you want;

Custom Printed Stickers

Made-to-Order Stickers Tell us the color and text and we will print them for you in only a few days. No set-up charge for letters & numbers; a one-time design fee may be applicable for graphics, logos, etc. (often only \$50-\$100). For rectangular or square shapes see page 15.



Call to order triangle or octagon shape

Pre-Printed Circles

Numbers



Days



Months



Inventory



Years

Quarters

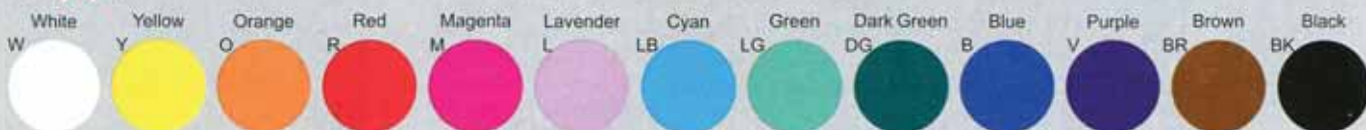
Handling



Quality Control & Inspection

To change color/text, see Custom Printed

One Color Blank Circles



Fluorescent colors also available on a non-synthetic paper stock: Yellow - FY, Pink - FP, Green - FG, Orange - FO

Convenient Sequential Sets

- ▶ One-color sets of 500 circles per roll:
 - Days: Sun-Sat (72x)
 - Months: Jan-Dec (42x)
 - Quarters: 1st-4th (125x)
 - Numbers: 1-10 (50x), 1-100 (5x), 1-500 or 501-1000 (1x)
- Other Sequences
- ▶ Use Custom Printed prices and sizes

Sticker Size D"	Qty per Roll	Custom Printed		Pre-Printed		One Color Blank		Add'l Color Price Each
		Part #	Roll Price	Part #	Roll Price	Part #	Roll Price	
3/4" diam.	500	LSS06D	27.50	LSP06D	23.00	LSB06D	18.00	10.00
1" diam.	500	LSS1D	29.00	LSP1D	24.00	LSB1D	19.00	10.00
1-1/2" diam.	500	LSS14D	42.00	LSP14D	36.00	LSB14D	30.00	15.00
3" diam.	500	LSS3D	78.00	LSP3D	66.00	LSB3D	54.00	35.00

Color Coding Dots

- ▶ Small circle dots 1/4" 3/8" or 1/2"
- ▶ Five sheets of dots packaged in a clear plastic pouch see page 17

Notes: 1. Include the one or two character sticker design code with order (ex: M or HG)
 2. Additional sizes and rectangular shapes are also available, call for more information
 3. Convenient, easy-to-use, heavy-duty Label & Circle Dispensers -see page 18

WAREHOUSE MAGNETS

LETTER NUMBER MAGNETS



Magnet Size H" x L"	Char.* Height H"	Maximum # Char. Per Size	Part # (Magnet with Characters)	Price
1 x 2	3/4	3	LQ1X2C.75	1.75
1 x 4	3/4	6	LQ1X4C.75	3.20
1 x 6	3/4	9	LQ1X6C.75	4.65
2 x 1.5	1-1/2	1	LQ2X1.5C1.5	1.10
2 x 4	1-1/2	3	LQ2X4C1.5	2.50
2 x 8	1-1/2	6	LQ2X8C1.5	4.75
2 x 11	1-1/2	9	LQ2X11C1.5	6.65
3 x 2.5	2-1/2	1	LQ3X2.5C2.5	1.55
3 x 6	2-1/2	3	LQ3X6C2.5	3.50
3 x 12	2-1/2	6	LQ3X12C2.5	6.70
3 x 18	2-1/2	9	LQ3X18C2.5	9.95
4 x 3.5	3-1/2	1	LQ4X3.5C3.5	2.15
4 x 9	3-1/2	3	LQ4X9C3.5	5.15
4 x 17	3-1/2	6	LQ4X17C3.5	9.60
4 x 25	3-1/2	9	LQ4X25C3.5	14.00

You Select Magnet Sign Size and Lettering

- ▶ Ideal for marking rack crossbeams, steel shelving, frame posts, steel doors and cabinets
- ▶ Reliable 1/32" thick magnet with vinyl covering and vinyl lettering is normally effective from 0-160°F.
- ▶ Price includes your character selection applied to the magnet for up to the maximum number of characters to fit that magnet size

Distinctive Color Choices

Vinyl Magnet: White, Black, Yellow, Orange, Blue, Red, Ivory, Brown, Green, Gold, Silver
 Vinyl Characters: Basic - Black, Blue, Red, Green, White
 Fluorescent - Green, Red, Orange, Yellow



MAGNETIC WRITE-ON SYMBOLS



Write numbers, initials or other indicators directly on a 1/32" thick magnet with *Damp Erase Pens* only. Circles, arrows, squares and other designs are computer precision cut into the magnetic surface available in 11 colors. Pricing is based on square inch size covering the shape.

Size H" x L"	Pkg Qty	Custom Part #	Pkg Price
1 x 1	25	MS1X1	28.00
2 x 2	25	MS2X2	63.00
3 x 3	25	MS3X3	110.25
4 x 4	25	MS4X4	140.00



DRY ERASE COLOR MAGNETS



Versatile Magnets

- ▶ Ideal for inventory, product info, quality control, and other warehouse functions
- ▶ Indicate quantities, status or your own message
- ▶ 1/32" thick magnet adheres to warehouse racks, crossbeams, and steel shelves, doors and frames

Write on Them

- ▶ For easy wipe-off, use our *Dry Erase Markers*
- ▶ For lasting content, use our *Premium Damp Erase Pens*

Many Colors

- ▶ Choice of 11 colors
- ▶ One color per pack

Related Product

- ▶ *Shelf Magnets* (p.2) for use with *Damp Erase Pens*

Available Options

Additional sizes
 2-color Double-Sided Write-on Magnets
 call for available sizes and pricing

Size H" x L"	Pkg Qty	Magnet Part #	Pkg Price
1 x 2	25	MW1X2	7.00
1 x 3	25	MW1X3	8.75
1 x 4	25	MW1X4	10.25
1 x 6	25	MW1X6	13.50
1 x 8	25	MW1X8	16.50
2 x 3	25	MW2X3	11.25
2 x 4	25	MW2X4	13.50
2 x 6	25	MW2X6	18.50
2 x 8	25	MW2X8	23.00
3 x 3	25	MW3X3	13.50
3 x 5	25	MW3X5	20.00
3 x 6	25	MW3X6	23.25
3 x 8	25	MW3X8	29.75
4 x 6	25	MW4X6	28.25
4 x 8	25	MW4X8	36.25
5 x 7	25	MW5X7	52.75

Colors: white, yellow, ivory, gold, silver, blue, orange, red, green, brown, black

DOUBLE-SIDED SIGNAL MAGNETS



Different Color on Each Side

- ▶ Reversible indicate inventory level or other signal at a quick glance
- ▶ Use a *Damp Erase Pen* to write in counts, status, re-order dates, etc.

Size H" x L"	Pkg Qty	Custom Part #	Pkg Price
1 x 1	25	MDS1X1	12.00
1 x 2	25	MDS1X2	18.00
2 x 2	25	MDS2X2	30.00
2 x 4	25	MDS2X4	54.00
3 x 5	25	MDS3X5	96.00

New Holding Power!

- ▶ Stronger adherence with thicker magnet

Two Color Combos

- ▶ Red / Green
- ▶ White / Red

WAREHOUSE SUPPLIES

ADHESIVE LETTER OR NUMBER STRIPS AND MOUNTS



Character Strip - 2" white



Mount on 3" Magnets



Mount on 4"x3" Signs

Single Character Strip or Number / Letter Kits

- Numbers 0-9, Letters A-Z, Dash -, Arrows ↑↔, Blank
- Strips are sold in a choice of:
 - ten 2" high black characters on white 2-3/8 x 1-1/4 vinyl
 - six 3" high black characters on yellow 3-1/2 x 1-1/2 vinyl
 - convenient kits of numbers or letters

Specify the desired character at the end of the strip Part #.

Common Applications

Bins, Doors, Cabinets, Racks, Pallets, and Do-It-Yourself Marking

Char. Height H"	Back. Color	One Strip, Number Kit, or Letter Kit	Total # of Char.	Part #	Price
2	White	Single Character	10	AC2C__	1.50
2	White	Kit: 5@0-1, 2@2-9	260	AC2CNK	35.00
2	White	Kit: 2@A-Z	520	AC2CLK	70.00
3	Yellow	Single Character	6	AC3C__	2.00
3	Yellow	Kit: 5@0-1, 2@2-9	156	AC3CNK	48.00
3	Yellow	Kit: 2@A-Z	312	AC3CLK	96.00

OR . . . Magnetize the Numbers & Letters

- Apply 2" white or 3" yellow adhesive characters to magnets for use on racks, cabinets, doors and other steel surfaces
- Magnet is sold in 50' and 200' rolls for cutting to your lengths

We recommend the following magnet cut lengths per # of characters:

# Char.	White Magnet L"	Yellow Magnet L"	# Char.	White Magnet L"	Yellow Magnet L"
1	1-1/4	1-1/2	6	7-1/2	9
2	2-1/2	3	7	8-3/4	10-1/2
3	3-3/4	4-1/2	8	10	12
4	5	6	9	11-1/4	13-1/2
5	6-1/4	7-1/2	10	12-1/2	15

We can pre-cut rolls into desired magnet lengths - call for a quote.

2-3/8" H White Magnet			3-1/2" H Yellow Magnet		
Length L"	Magnet Part #	Roll Price	Length L"	Magnet Part #	Roll Price
50' roll	M23X600	130.00	50' roll	M34X600	180.00
200' roll	M23X2400	495.00	n/a	n/a	n/a

OR - Place the Characters on Mounting Signs

- 1" magnetic or adhesive foot for attachment; apply 2" white or 3" yellow adhesive characters to plastic signs (white or yellow)

4" H x 3" L White Sign			4" H x 3" L Yellow Sign		
Mount Style	Sign Part #	Price Each	Mount Style	Sign Part #	Price Each
Adhesive	QA4X3A	1.95	Adhesive	QAY4X3A	2.95
Magnetic	QA4X3M	2.35	Magnetic	QAY4X3M	3.35

MAGNETIC TAPE ROLLS



Magnetize Items!

- Use this sturdy, adhesive backed magnetic tape to magnetize your supplies: tags, clips, folders, notices and more
- Strong 60 mil thickness

Do-It-Yourself Cutting

- Measure and cut the roll to your desired lengths using a strong pair of scissors or utility knife
- Or, if you prefer, we can cut it for you (only \$0.10 per cut)

Width W"	# Ft Roll L'	Adhesive Backed	
		Roll Part #	Price
1/2	100	TP12X100A	38.00
3/4	100	TP34X100A	55.50
1	100	TP1X100A	74.00
1-1/2	100	TP15X100A	110.50
2	100	TP2X100A	148.00
3	100	TP3X100A	211.00

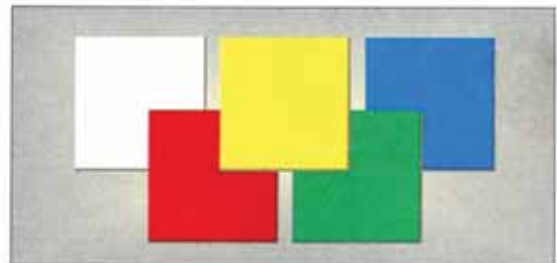
Non-Writing Surface

- This dark colored magnet is NOT a surface on which to write
- See our *Shelf Magnets* on page 2 for write-on, color surfaces

Plain-Backed Style

- To create and apply your own magnetic labels, use a non-adhesive backed magnetic tape
- See our *Magnetic Label Mounts* on page 10

SIGN BLANKS



Create Your Own Signs

- Sturdy 40 mil styrene plastic sign blanks have square corners and no backing
- Color choices: white, yellow, blue, red, green
- Custom options include: rounded corners, pre-drilled holes, adhesive or magnetic strip backing, and special sizes.

Face Size H" x L"	White Blanks		Color Blanks	
	Part #	Price	Part #	Price
8 x 8	NQ8X8	1.85	NQX8X8	2.55
8 x 16	NQ8X16	3.30	NQX8X16	4.55
12 x 12	NQ12X12	3.70	NQX12X12	5.00
12 x 18	NQ12X18	5.35	NQX12X18	7.25
12 x 24	NQ12X24	7.00	NQX12X24	9.50
18 x 18	NQ18X18	7.85	NQX18X18	10.60

FLOOR MARKING TAPES



Marking Solid Colors



Warning Stripe Colors



Choose 2" or 3" widths on 108 ft. rolls

Marking Safety and Warning Tapes

- ▶ Mark warehouse and shop floors with highly visible color tape
- ▶ Vinyl, self-adhesive tape in two styles:
 - Marking Color Tapes** - plastic tape in solid ANSI colors
 - Warning Stripe Tapes** - overlaminated tape with standard OSHA safety color striping

Marking Color Tape Applications

- ▶ Mark floors, walls, posts, equipment, and other areas for traffic control, hazards, warnings, and other safety protection
- ▶ Solid color tapes have a durable 6 mil vinyl construction that retain their strength and can conform to a variety of surface shapes
- ▶ Available in popular ANSI colors:
 - Yellow** - caution
 - Red** - fire protection
 - White** - traffic areas or housekeeping warnings

Warning Stripe Tape Applications

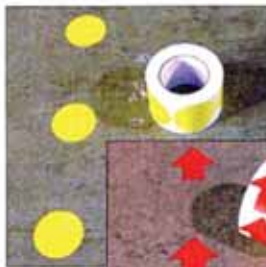
- ▶ Identify areas of hazards, fire protection, safety warnings, OSHA compliance, and other traffic controls with striped taping
- ▶ Striped tapes have a tacky permanent adhesive and are overlaminated for protection against oil, grease, solvents and moisture
- ▶ Available in standard OSHA 2-colors:
 - Black/Yellow** - caution: hazards, stairs, poles, corners, etc.
 - Red/White** - danger: fire equipment and obstructions
 - Black/White** - boundaries: traffic areas, housekeeping areas

Floor Tape Style	Tape Roll Size W" x L'	Qty	Tape Roll Part #	Price Each
Warning Stripes	2" x 108'	1 roll	TFL2X108	24.75
Warning Stripes	3" x 108'	1 roll	TFL3X108	39.50
Marking Solid Color	2" x 108'	1 roll	TF2X108	9.50
Marking Solid Color	3" x 108'	1 roll	TF3X108	14.00

Available Options - special order, 4 roll minimum

Solid Colors: Blue, Green, Orange, Purple, Black, Grey, Brown
 Sizes: Solids in 1" and 4" widths

FLOOR MARKING SYMBOLS



3" Dots in Yellow or Red

Mark Floors, Walls, Aisles, Hazards

Increase safety, control traffic flow, and mark areas with highly visible, pressure-sensitive adhesive, durable, waterproof vinyl floor markings.

Symbol Size "	Qty/ Roll	Roll Part #	Roll Price
3" Dot	500	TFD3	59.00
3" Arrow	500	TFA3	59.00

Options - special order, 4 roll minimum

Colors: Blue, Green, Orange, Black, White
 Sizes: 1", 2", 4", 5" widths

3" Arrows in Red or Yellow

FLOOR TAPE APPLICATOR

Quickly & Accurately Apply Tapes to Floors

Eliminate the kneeling and stooping with this durable steel applicator. Use tape rolls up to 4" width and 3" core. Roller wheel design provides an easy, straight application to the floor.



Dispenser:
 Steel frame
 Roller
 36"H handle
 Dual hand grips

Roll Sizes	Qty	Part #	Unit Price
up to 4"	1	TFR	139.00



CUSTOM READY-TO-APPLY WORDING

Easy One-Piece Adhesive Vinyl Lettering

Die-cut, high quality, indoor/outdoor adhesive vinyl with liner for quick application in a straight, neat line. Created as one convenient grouping. Identify racks, doors, equipment, vehicles, etc.



Holding Area 6 is a one-piece group with 12 characters

Holding Area 6 is also in one-piece with 12 characters

Basic Colors: Blue, Green, Red, Black, White
 Fluorescent Colors: Red, Orange, Yellow, Green
 Reflective Color: Silver

Size H"	Basic Color		Fluorescent Color		Reflective Color	
	Character Part #	Price Each	Character Part #	Price Each	Character Part #	Price Each
2	QLL2	1.10	QLFL2	1.15	QLRL2	1.85
3	QLL3	1.50	QLFL3	1.65	QLRL3	3.20
4	QLL4	1.90	QLFL4	2.25	QLRL4	5.00
5	QLL5	2.40	QLFL5	2.90	QLRL5	7.25
6	QLL6	2.90	QLFL6	3.65	QLRL6	9.90
8	QLL8	4.10	QLFL8	5.35	QLRL8	16.45
10	QLL10	5.40	QLFL10	7.40	QLRL10	24.75
12	QLL12	6.90	QLFL12	9.75	QLRL12	34.70

Priced per character - Letters: A-Z, a-z Numbers: 0-9 Special symbols: # & % . , " \$ - + →
 See Sign Distance Chart on page 28 for character readability ranges

WHITEBOARDS & MAGNETIC ACCESSORIES

We offer a huge variety of long lasting, dry erase, magnetic whiteboards - including a broad selection for warehouse type facilities. Below is a brief sampling of these high quality whiteboards, plus some additional magnetic accessories.

WAREHOUSE METRICS BOARDS



Organize, manage and communicate reporting data

LOADING DOCK BOARDS

Truck #	Truck ID	Company	Arrival	Load Desc.	Truck #	Company	Departure	Notes
1	101	ABC	10:00	Box	201	DEF	11:00	
2	102	ABC	10:15	Box	202	DEF	11:15	
3	103	ABC	10:30	Box	203	DEF	11:30	
4	104	ABC	10:45	Box	204	DEF	11:45	
5	105	ABC	11:00	Box	205	DEF	12:00	
6	106	ABC	11:15	Box	206	DEF	12:15	
7	107	ABC	11:30	Box	207	DEF	12:30	
8	108	ABC	11:45	Box	208	DEF	12:45	
9	109	ABC	12:00	Box	209	DEF	1:00	
10	110	ABC	12:15	Box	210	DEF	1:15	
11	111	ABC	12:30	Box	211	DEF	1:30	
12	112	ABC	12:45	Box	212	DEF	1:45	
13	113	ABC	13:00	Box	213	DEF	2:00	
14	114	ABC	13:15	Box	214	DEF	2:15	
15	115	ABC	13:30	Box	215	DEF	2:30	
16	116	ABC	13:45	Box	216	DEF	2:45	
17	117	ABC	14:00	Box	217	DEF	3:00	
18	118	ABC	14:15	Box	218	DEF	3:15	
19	119	ABC	14:30	Box	219	DEF	3:30	
20	120	ABC	14:45	Box	220	DEF	3:45	

Inbound & outbound dock scheduling management

ROLLING WHITEBOARDS



Industrial strength, heavy-duty, roll-around whiteboards

SHIPPING SCHEDULE BOARDS

Truck #	Truck ID	Company	Destination	Load Type	Time In	Time Out	Notes
1	101	ABC	Los Angeles	Box	10:00	11:00	
2	102	ABC	Los Angeles	Box	10:15	11:15	
3	103	ABC	Los Angeles	Box	10:30	11:30	
4	104	ABC	Los Angeles	Box	10:45	11:45	
5	105	ABC	Los Angeles	Box	11:00	12:00	
6	106	ABC	Los Angeles	Box	11:15	12:15	
7	107	ABC	Los Angeles	Box	11:30	12:30	
8	108	ABC	Los Angeles	Box	11:45	12:45	
9	109	ABC	Los Angeles	Box	12:00	1:00	
10	110	ABC	Los Angeles	Box	12:15	1:15	
11	111	ABC	Los Angeles	Box	12:30	1:30	
12	112	ABC	Los Angeles	Box	12:45	1:45	
13	113	ABC	Los Angeles	Box	13:00	2:00	
14	114	ABC	Los Angeles	Box	13:15	2:15	
15	115	ABC	Los Angeles	Box	13:30	2:30	
16	116	ABC	Los Angeles	Box	13:45	2:45	
17	117	ABC	Los Angeles	Box	14:00	3:00	
18	118	ABC	Los Angeles	Box	14:15	3:15	
19	119	ABC	Los Angeles	Box	14:30	3:30	
20	120	ABC	Los Angeles	Box	14:45	3:45	

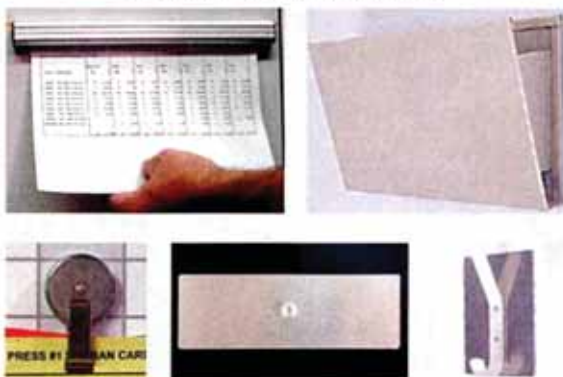
Outgoing truck and loading time status

CUSTOM WHITEBOARDS



Highly durable, dry-erase surface with your full color design

MAGNETIC ACCESSORIES



Magnetic grips, file trays, clips, hooks, hangers and more

Low Cost & High Quality

- ▶ Choice of sign materials: sturdy 40 mil styrene plastic, 40 mil aluminum, or self-adhesive vinyl decal
- ▶ Each color printed sign is overlaminated for UV protection and resistant to dirt, water and common solvents
- ▶ Sign is constructed with rounded corners and includes four holes or two strong foam adhesive strips

Insert Your Own Wording - SAME STANDARD PRICE!

- ▶ Create your own message to place in any of the Printed Warehouse Sign designs on pages 24-26
- ▶ Select the applicable "Your own message here" sign design - no additional charge for printing your own text content
- ▶ Other "non-Standard" designs can also be printed - see page 27 for Custom Printed Signs



Design #: S100



Design #: S102



Design #: S103



Design #: S021



Design #: S022



Design #: S023



Design #: S024



Design #: S104



Design #: S105



Design #: S025



Design #: S027



Design #: S107



Design #: S028



Design #: S029



Design #: S108



Design #: S030



Design #: S109



Design #: S110



Design #: S111



Design #: S031



Design #: SC904



Design #: S033



Design #: S034



Design #: S121



Design #: S122



Design #: S035



Design #: S123



Design #: S124



Design #: S125



Design #: S133



Design #: S134



Design #: S135



Design #: S136



Design #: S137



Design #: S127



Design #: S128



Design #: S129



Design #: S156



Design #: S131



Design #: S139



Design #: S140



Design #: S141



Design #: S142



Design #: S036



Design #: S037



Design #: S039



Design #: S143



Design #: S040

Alphabetic listing continues on pages 25-26

TO ORDER: SEE SIZES, PRICES & PART #S ON PAGE 26

Alphabetic listing continued from page 24



Alphabetic listing continues on page 26

TO ORDER: SEE SIZES, PRICES & PART #S ON PAGE 26

Alphabetic listing continued from page 25



Using one of our standard Printed Warehouse Sign designs - insert your own text message - SAME PRICE!
 If you prefer to create a new design, see Custom Printed Signs on page 27



Low Cost, Popular Warehouse Designs

- ▶ Choice of sturdy 40 mil styrene plastic, 40 mil aluminum, or self-adhesive vinyl decal
- ▶ Each sign is overlaminated for UV protection and resistant to dirt, water and common solvents
- ▶ Sign has rounded corners and includes four holes or two strong foam adhesive strips

Printed Sign Options

- ▶ Sizes made-to-order in plastic or aluminum up to 24"x48" - call for price quote
- ▶ Reinforced metal grommets - \$0.50 per hole
- ▶ Magnetic strip backed (two 1" 60 mil strips) - per sign: add \$2.30 for any 7"x10", \$2.80 for plastic 10"x14", or \$5.40 for aluminum 10"x14" (120 mil)
- ▶ Reverse image - switch background and graphic colors
- ▶ Other styles: 2-sided, projecting, hanging, etc. - see pages 29-31
- ▶ To create and print a custom design - see *Printed Custom Signs* page 27

Warehouse Sign Material	Sign Size H" x L"	Warehouse Sign	
		Part #	Price
PLASTIC	7 x 10	SQ7X10	13.00
	4-Hole 10 x 14	SQ10X14	19.50
PLASTIC	7 x 10	SQA7X10	13.00
	Foam Adhesive 10 x 14	SQA10X14	19.50
ALUMINUM	7 x 10	SW7X10	18.00
	4-Hole 10 x 14	SW10X14	27.00
MAGNET	7 x 10	SM7X10	22.00
	30 mil 10 x 14	SM10X14	33.00
VINYL DECAL	7 x 10	SV7X10	10.00
	Self-Adhesive 10 x 14	SV10X14	13.00

TO ORDER: indicate Sign Part # and Sign Design #

PRINTED CUSTOM SIGNS

Create Your Own Design

- ▶ Full color detailed graphics print capability
- ▶ Common designs for specific regulatory compliance
- ▶ Simply provide your artwork with bilingual text, symbols, company logos or multi-color images
- ▶ No minimum order required
- ▶ Select from any sample below or provide your own creation

Low Cost & High Quality

- ▶ Choice of sign materials: sturdy 40 mil styrene plastic, 40 mil aluminum, or self-adhesive vinyl decal
- ▶ Each color printed sign is overlaminated for UV protection and resistant to dirt, water and common solvents
- ▶ Sign is constructed with rounded corners and includes four holes or two strong foam adhesive strips

Industrial Graphics



Design #: S900



Design #: S901



Design #: S902



Design #: S903



Design #: S904



Design #: S905

Standard Symbols



Design #: S910



Design #: S912



Design #: S913



Design #: S914



Design #: S915



Design #: S916

Geometric Shapes



Design #: S920



Design #: S921



Design #: S922



Design #: S923



Design #: S924



Design #: S925

Bilingual Messages



Design #: S930



Design #: S931



Design #: S932



Design #: S933



Design #: S934



Design #: S935

Multi-Color Images



Design #: S940



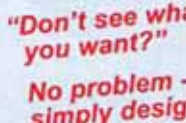
Design #: S941



Design #: S942



Design #: S943



Your Unique Design



Design #: S990

Made to Your Specifications

- ▶ The designs above are only samples - you create exactly what you need!
- ▶ Simply provide a file from a popular desktop publishing, illustration or CAD pdf OR fax a layout sketch and we'll create a file for you
- ▶ Orders for custom created signs will receive a design proof for your approval prior to printing the actual sign
- ▶ No charge for colors, logos and graphics in readily convertible files supplied with at least 100 dpi output at full sign size
- ▶ Complex graphics, layout design work, and non-convertible files may incur a one-time set-up charge

Custom Sign Options

- ▶ Sizes made-to-order in plastic or aluminum up to 24"x48" - call for price quote
- ▶ Reinforced metal grommets - \$0.50 per hole
- ▶ Magnetic strip backed (two 1" 60 mil strips) - per sign: add \$2.30 for any 7"x10", \$2.80 for plastic 10"x14", or \$5.40 for aluminum 10"x14" (120 mil)

Custom Sign Material	Sign Size H" x L"	Custom Sign	
		Part #	Price
PLASTIC	7 x 10	SQC7X10	18.00
	10 x 14	SQC10X14	24.50
PLASTIC	7 x 10	SQCA7X10	18.00
	10 x 14	SQCA10X14	24.50
Foam Adhesive	10 x 14	SWC7X10	23.00
ALUMINUM	7 x 10	SWC7X10	23.00
	10 x 14	SWC10X14	32.00
MAGNET	7 x 10	SMC7X10	27.00
	10 x 14	SMC10X14	38.00
VINYL DECAL	7 x 10	SVC7X10	15.00
	10 x 14	SVC10X14	18.00

TO ORDER: indicate Sign Part # and Custom Design #

HOW TO SPEC YOUR CUSTOM SIGNS

STEP #1

Measure the maximum distance from which you will need to read or scan the sign (allow for both length and height). Match your estimated distance range in the Sign Distance Chart to determine the optimal character size. Select character colors from choices below.

Sign Distance Chart

Match readability distance with the character height

Character Size	Estimated Range
2"	16'
3"	24'
4"	32'
6"	48'
10"	80'
14"	112'

NOTE: We recommend testing one sign initially with your order because lighting, display height, and obstructions are unique to every facility.

STEP #2

Add 1"-2" to the character height (step #1), this is your sign height. Determine the number of characters you will be placing in one row on the sign. Multiply that number X the character size from step #1 X 0.86 and round up to the next whole number, this is the minimum recommended sign length. See sizing example below - in general, compressed characters are not as readable as full width characters.

NOTE: We recommend reviewing your requirements with our Customer Service Department - especially if you are unsure about any of the above steps or if you are displaying a bar code or graphic image. To ensure your complete satisfaction, for most custom sign (pages 28-31) orders, we will send you one sign for your approval prior to manufacturing and shipping your entire order.

STEP #3

Consider the directions and angles from which you need to read the sign. Select the style of sign and number of faces that will best display your information. See choices on pages 29-31.

<i>Aisle</i> (racks and shelves)	one or two sided
<i>End-of-Rack</i> (racks)	two-sided
<i>Hanging</i> (overhead)	one, two, three or four sided
<i>Flat</i> (door, dock, wall)	one sided

STEP #4

Select dark color lettering (such as black) on the lighter color sign materials (white or yellow) and use light color lettering (such as white) on the darker sign materials (blue, green or red). Most sign styles are available in a choice of material colors:



STEP #5

Choose the most appropriate mounting method.

- Adhesive* - for more permanent installations
- Magnetic* - for possible sign relocation or re-use
- Hanging* - overhead structure from which to suspend the sign
- Velcro* - for repeated movement among locations
- Hardware* - bolted, screwed, riveted using holes in the signs

CUSTOM SIGN LETTERS, NUMBERS & GRAPHICS

Vinyl Characters



Height H"	Basic Color		Fluorescent	
	Part #	Price	Part #	Price
2	QL2	1.35	QLF2	1.45
3	QL3	1.75	QLF3	1.95
4	QL4	2.20	QLF4	2.55
5	QL5	2.65	QLF5	3.20
6	QL6	3.15	QLF6	3.95
8	QL8	4.30	QLF8	5.70
10	QL10	5.65	QLF10	7.85
12	QL12	7.15	QLF12	10.30
14	QL14	8.85	QLF14	13.15

NOTE: Prices are per character per surface face (one side) and include application to the sign.

Custom Vinyl Graphics Also Available

- For more complex messages or designs, our die-cut vinyl is also sold by the square inch
- It may be more economical to use square inch pricing for messages with many characters, multiple lines of text, or custom graphics (logos, warnings, messages, directions) such as the samples at left
- Call with your design for a quick price quote

Precision-Cut Vinyl Characters

- Custom die-cut vinyl letters, numbers, and many special characters are specifically created for application to signs
- Our high quality vinyl is rated for both indoor and outdoor applications

Character Colors

We offer a wide range of colors and shades including:

Basic: BLACK WHITE RED BLUE GREEN

Fluorescent: Red, Orange, Yellow, Green and all other available colors can be seen by requesting a sample prior to ordering.

Character Sizing

- The size charts include standard character heights, but we can also compress multi-character widths to fit a specific sign size
- Per character sizing is: width equals 86% of height; with 60% compression, width equals 52% of height
- In general, compressed characters are not as readable as full width characters of the same height

Same Multi-Characters, Same Height, Varying Widths

Examples	A12	A12	A12
Sizing	No Compression	80% Compression	60% Compression
Actual Print Area	6" H x 15.5" W	6" H x 12.4" W	6" H x 9.3" W

CUSTOM AISLE SIGNS



Find Aisles Quickly and Safely

- ▶ Increase the efficiency of your picking, stocking and loading personnel with custom made signs
- ▶ Each white or color plastic sign has a 1"-2" foot with a foam tape adhesive or a magnetic strip
- ▶ Sizes up to 24" x 46"

Common Applications

White or Blue: End-of-Aisle Markers
 Yellow or Red: Warning Messages
 Green & Red: In/Out-of-Stock Indicators

Options

Pre-drilled holes available
 Signs with pouches - see page 24



Characters and graphics priced separately - see page 28

Sign color choices:

White, Yellow, Blue, Red, Green ▶

		Adhesive Mounted Signs				Magnet Mounted Signs			
		Blank White Sign		Blank Color Sign		Blank White Sign		Blank Color Sign	
Sign Size H" x L"	Recommend Char. H"	Sign Only Part #	Price	Sign Only Part #	Price	Sign Only Part #	Price	Sign Only Part #	Price
4 x 3	3"	QA4X3A	2.30	QAX4X3A	2.40	QA4X3M	2.70	QAX4X3M	2.80
4 x 6	3"	QA4X6A	2.70	QAX4X6A	2.90	QA4X6M	3.25	QAX4X6M	3.50
8 x 6	6"	QA8X6A	3.55	QAX8X6A	4.00	QA8X6M	4.45	QAX8X6M	4.90
8 x 14	6"	QA8X14A	5.00	QAX8X14A	5.90	QA8X14M	6.90	QAX8X14M	7.80
12 x 10	10"	QA12X10A	5.50	QAX12X10A	6.50	QA12X10M	8.10	QAX12X10M	9.10
12 x 22*	10"	QA12X22A	10.45	QAX12X22A	12.45	QA12X22M	13.05	QAX12X22M	15.05

* Includes a plastic bottom edge stiffener

Pre-Lettered Signs: IN-STOCK FOR SAME OR NEXT DAY SHIPMENT and shipped as quantities are available; stock is replenished daily.

Sign Size	Char. H"	Part #	Price	Part #	Price	Part #	Price	Part #	Price
12 x 10**	10" included	QAL12X10A	15.50	n/a	n/a	QAL12X10M	18.10	n/a	n/a

** Includes one black 10" vinyl character (A-Z, 1-9 available) applied to both sides of a white sign

CUSTOM END-OF-RACK SIGNS



See Rack & Aisle Locations

- ▶ Increase visibility of locations
- ▶ White, yellow, blue, red or green sign with two 12" x 12" faces and 2" feet with adhesive tape
- ▶ Plastic sign will flex to span rack flues from approximately 11"-13"
- ▶ Face sizes up to 18" available

Face Size H" x L"	Blank White Sign Part #	Price Each	Blank Color Sign Part #	Price Each
12 x 12	QV12X12A	12.85	QVX12X12A	15.30

4 pre-drilled holes provided. We recommend bolting the top of sign to racks. Part # QBH0 includes 2 bolts & nuts for \$1.00.

CUSTOM PROJECTING WALL SIGNS

Increase Visibility with Two and Three Viewing Directions

- ▶ Affix signs to walls, over doorways, on crossbeams, above docks and bays to display locations, safety information, warning and caution messages
- ▶ Two sign designs: Three-View Angled 45°/135° from wall or Two-View Flat 90° constructed of durable .04" thick plastic in either white, yellow, blue, red, green

Face Size H" x L"	Style & Mounting Holes	Blank White Sign Part #	Price Each	Blank Color Sign Part #	Price Each
4 x 4	Angled - 2	QV4X4H2	4.80	QVX4X4H2	5.15
4 x 4	Flat - 2	QAC4X4H2	2.40	QAXC4X4H2	2.60
8 x 8	Angled - 4	QV8X8H4	7.75	QVX8X8H4	8.90
8 x 8	Flat - 2	QAC8X8H2	3.70	QAXC8X8H2	4.25
12 x 12	Angled - 4	QV12X12H4	11.95	QVX12X12H4	14.40
12 x 12	Flat - 2	QAC12X12H2	5.75	QAXC12X12H2	6.90
18 x 7	Angled - 6	QV18X7H6	12.10	QVX18X7H6	14.50
18 x 7	Flat - 3	QAC18X7H3	5.70	QAXC18X7H3	6.85



Angled Three-View



Flat Two-View

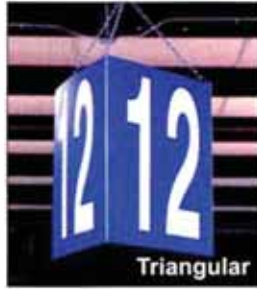
Sign lettering priced separately - see page 28

Mounting holes provided. Flat signs have rounded corners for safety. Angled signs shipped in 2 pieces ready to be adjoined and mounted.

Available Options

- ▶ Custom sizes up to 24"x46" flat or 17"x18" angled
- ▶ Adhesive or magnetic strip on the foot for attachment

CUSTOM HANGING SIGNS



NOTE: Sign letters, numbers, color graphics and bar code labels are priced separately - see pages 15 & 28

A Shape to Match the Viewing Angles

- ▶ **Flat** - 2 opposite facing views
- ▶ **Triangular** - 3 viewing angles
- ▶ **Cube** - all 4 viewing angles
- ▶ **Angled** - angle adjustable for readability
- ▶ **Dual Angled** - 2 man-down viewing angles
- ▶ Ideal to mark or identify areas where racks, shelves or equipment can block a line of sight
- ▶ Create letters, numbers, special characters, warning symbols, directional arrows, and logos
- ▶ .04 thick plastic sign is lightweight, yet durable, and can hang from almost any type of structure

Signs are shipped flat, simple assembly is required. Additional mounting and hanging hardware is sold separately - see *Hanging Sign Hardware* below.

Hanging Sign Hardware

Additional Hardware *	Pkg Qty	Part #	Pkg Price
Adhesive Mount	2	QAM ¹	2.00
Magnetic Mount	2	QMM ¹	3.00
100' Hanging Chain	1	QCH ²	40.00
1" S-Hooks	25	QSH ²	2.00
Sign Edge Stiffener	1	QES ³	.05/in

- * ¹ Mounts fit *Flat* signs only
- ² Hanging Chains and Hooks fit all shapes of hanging signs
- ³ Sign Edge Stiffeners are recommended for sides 18" or longer

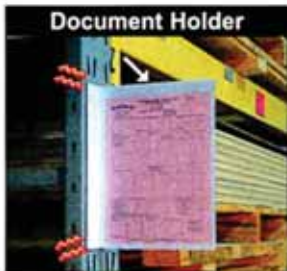
Sign colors:
White, Yellow, Blue, Red, Green ▶

Face Size H" x L"	Design Shape	Blank White Sign		Blank Color Sign	
		Sign Only Part #	Price	Sign Only Part #	Price
8 x 16	Flat	QH8X16	3.50	QHX8X16	4.75
12 x 12	Flat	QH12X12	3.90	QHX12X12	5.20
12 x 24	Flat	QH12X24	9.00	QHX12X24	11.50
16 x 24	Flat	QH16X24	11.20	QHX16X24	14.45
24 x 24	Flat	QH24X24	15.65	QHX24X24	20.40
12 x 11	Triangular	QHT12X11	18.70	QHTX12X11	21.70
18 x 17	Triangular	QHT18X17	35.75	QHTX18X17	42.55
12 x 11	Cube	QHC12X11	24.80	QHCX12X11	28.85
18 x 17	Cube	QHC18X17	47.65	QHCX18X17	56.70
10 x 12	Angled	QHA10X12	11.95	QHAX10X12	13.10
12 x 16	Angled	QHA12X16	14.50	QHAX12X16	16.25
5 x 12	Dual Angled	QHD5X12	13.25	QHDX5X12	14.75
11 x 18	Dual Angled	QHD11X18	25.95	QHDX11X18	30.50

Hanging Sign Prices Include

- Flat* - two hanging holes
- Triangular & Cube* - hanger hook, chain from sign to hook, edge stiffeners
- Angled* - four holes, S-hooks, chain to holes, side edge stiffeners
- Dual Angled* - two holes, snap-in chain mounts, top edge stiffeners on larger sizes

WAREHOUSE POUCH SIGNS



Document Holder

A Convenient Place to Hold Forms & Tickets

- ▶ Ideal for securing stock rotation forms and inventory instructions or inserting aisle location sheets (especially for changing locations)
- ▶ Choice of two mounting styles: an adhesive tape strip to permanently affix the sign or a magnetic strip to easily remove and replace it
- ▶ Each white or color plastic sign has a 1'-2" foot with a clear, strong 8 gauge vinyl pouch (opening at top) on a choice of 1 or 2 sign sides

Available Options

- ▶ Additional sizes, pre-drilled holes, sign lettering and numbering - see page 28



Location Insert

Available sign colors:

White, Yellow, Blue, Red, Green ▶

Pouch Size H" x L"	# of Pouches	Adhesive Strip Mounted				Magnet Strip Mounted			
		White Pouch Sign		Color Pouch Sign		White Pouch Sign		Color Pouch Sign	
		Part #	Price	Part #	Price	Part #	Price	Part #	Price
4 x 6	1	QA1P4X6A	4.35	QAX1P4X6A	4.60	QA1P4X6M	5.00	QAX1P4X6M	5.25
4 x 6	2	QA2P4X6A	5.85	QAX2P4X6A	6.15	QA2P4X6M	6.50	QAX2P4X6M	6.75
12 x 9	1	QA1P12X9A	8.50	QAX1P12X9A	9.50	QA1P12X9M	11.15	QAX1P12X9M	12.15
12 x 9	2	QA2P12X9A	12.50	QAX2P12X9A	12.50	QA2P12X9M	14.10	QAX2P12X9M	15.15

CUSTOM FLAT PLASTIC SIGNS

Versatile, Custom Made Plastic Signs

- ▶ Ideal for marking racks, doors, aisles and other warehouse locations - beams, walls, posts, docks, bays, secure areas
- ▶ Constructed of sturdy 40 mil styrene - white or color
- ▶ Rounded corners and no holes
- ▶ Two strong, full length adhesive strips

Sign Size H" x L"	Surface	Blank Sign Part #	Price
12 x 12	White Plastic	NQC12X12A2	5.30
12 x 18	White Plastic	NQC12X18A2	6.95
12 x 24	White Plastic	NQC12X24A2	8.60
18 x 18	White Plastic	NQC18X18A2	9.80
24 x 24	White Plastic	NQC24X24A2	15.95
24 x 48	White Plastic	NQC24X48A2	29.20
12 x 12	Color Plastic	NQXC12X12A2	6.50
12 x 18	Color Plastic	NQXC12X18A2	8.70
12 x 24	Color Plastic	NQXC12X24A2	10.95
18 x 18	Color Plastic	NQXC18X18A2	12.35
24 x 24	Color Plastic	NQXC24X24A2	20.40
24 x 48	Color Plastic	NQXC24X48A2	38.30



White sign, reverse lettering



Yellow sign, 2-color lettering



Blue sign, white lettering



White sign, 2-color lettering



NOTE: Sign letters & numbers priced separately - see page 28

Available Options

Sign material colors: White, Yellow, Blue, Red, Green
Magnetic strip or plain backing, pre-drilled hole patterns, custom sizes

CUSTOM FLAT METAL SIGNS



Enamel Aluminum



Steel with sample sign

Durable Aluminum Signs

- ▶ Baked enamel style is .045" thick, white, 4 pre-drilled corner holes
- ▶ Reflective vinyl style is .08" thick, 4 pre-drilled holes with one centered in each of the 4 sides

Steel Signs for Magnets

- ▶ 24 gauge white steel on which to display magnetic signs or letters
- ▶ Rounded corners, 4 corner holes

NOTE: Letters & numbers priced separately - see page 28

Common Applications

Docks, Overhead Doors, Fenced Areas & Gates, Walls, Posts

Sign Size H" x L"	Surface Type	Blank Sign Part #	Price
12 x 9	Enamel Alum.	QWC12X9	12.00
12 x 12	Enamel Alum.	QWC12X12	14.00
12 x 18	Enamel Alum.	QWC12X18	17.75
12 x 8	Reflective Alum.	QRC12X8	20.00
12 x 18	Reflective Alum.	QRC12X18	45.00
18 x 24	Reflective Alum.	QRC18X24	85.00
18 x 18	White Steel	QWS18X18	20.00

LEAD TIMES

Stock Orders: 5 - 7 days
Custom Orders: 10 - 14 days



CALIFORNIA
LABEL PRODUCTS

www.californialabel.com

PRODUCTS & SERVICES:

- Full Color Product Labels
- Flexographic / Offset Printing
- Inkjet Printing Systems
- Thermal Transfer Printers
- Thermal Transfer Labels & Ribbons
- Online Ordering
- UPC/EPC/Price Tickets & Stickers
- LPN Barcode Labels
- RFID Solutions
- Woven & Printed Labels
- Heat Transfer Labels
- Care & Content Labels
- Buttons, Snaps & Rivets
- Embroidered Patches
- Custom Hangtags
- Certified Service Technicians

310.523.5800